

# Innovative ways of approaching NBS in coastal and estuarine cities

SARCC Conference, December, 2022

Amy Pryor

Technical Director, Thames Estuary Partnership  
Chair, Coastal Partnerships Network

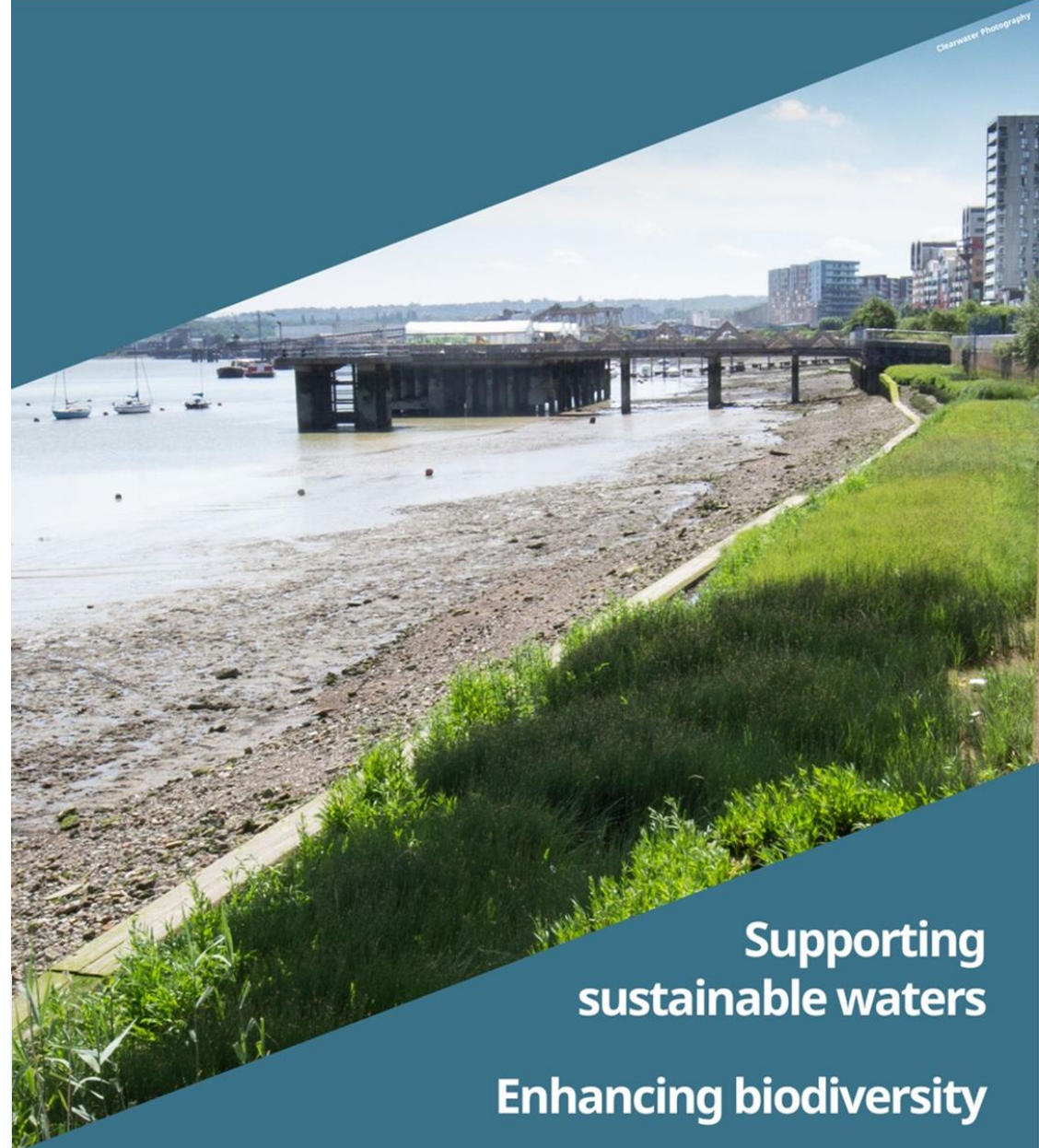
## Thames Estuary Partnership

Delivering Locally, Connected Nationally

Founding partners



[thamesestuarypartnership.org](https://thamesestuarypartnership.org)



Supporting  
sustainable waters

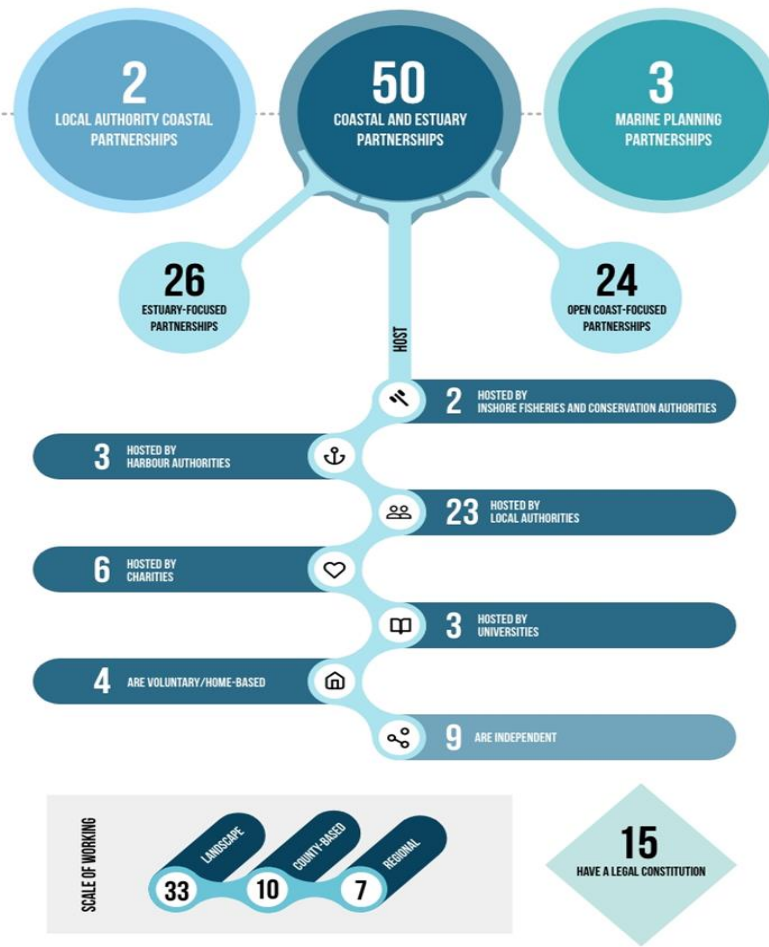
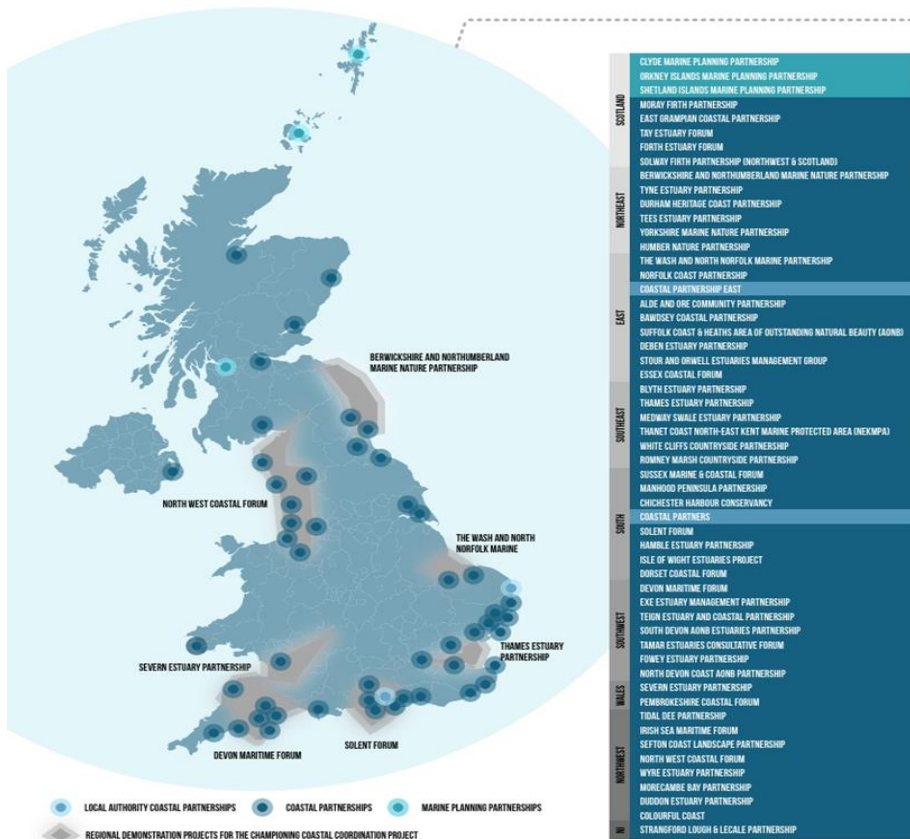
Enhancing biodiversity

Increasing skills through  
inclusive community delivery



# UK COASTAL PARTNERSHIPS

SOURCE: CPN AUDIT - 2020-2022



*‘Cross-sectoral, place-based partnerships advocating the implementation of the ecosystem approach, sustainable use of marine resources and integrated, coordinated management across a stretch of coastline or estuarine system’*

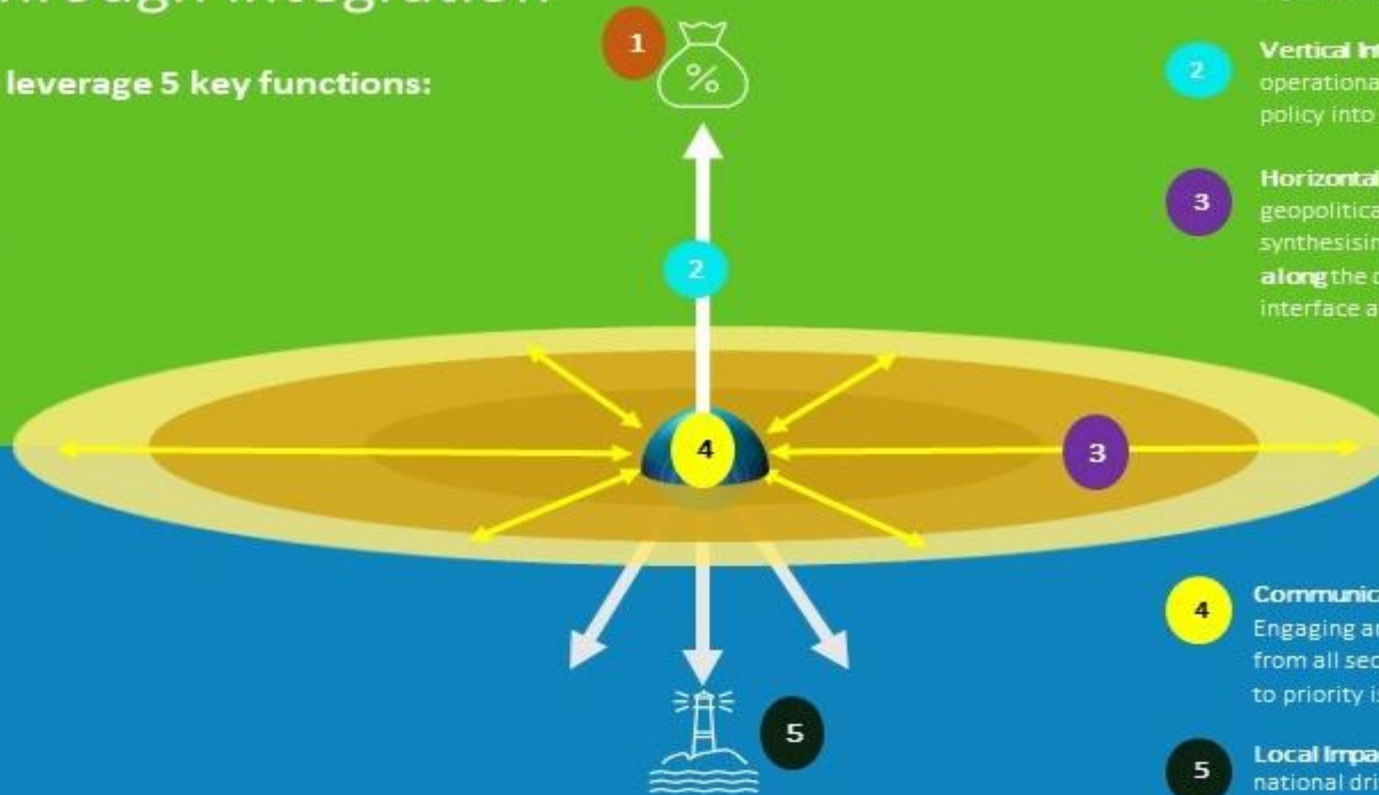
# Coastal and Estuary Partnerships

Connecting across socio-economic and environmental needs, across catchment, coast and marine

## Coordination at the Coast: resilience through integration

### Coastal Partnership leverage 5 key functions:

1. Accessing funding
2. Vertical Integration
3. Horizontal Integration
4. Communications
5. Bottom-up delivery



**1 Harmonising funding:** Accessing and rationalising government funding instruments with integrated policy and legislation.

**2 Vertical Integration:** Working to distil, operationalise and translate national policy into local delivery and impact.

**3 Horizontal Integration:** Bridging geopolitical and sectoral divides by synthesising a broad range of issues **along** the coast and **across** the land-sea interface at nested scales.

**4 Communications for Coordination:** Engaging and convening stakeholders from all sectors to co-create solutions to priority issues.

**5 Local Impact and Delivery:** Translating national drivers in to meaningful action through partnerships and dialogue

# Thames Estuary & TE2100

## Thames Estuary 2100 Plan Area

Thames Estuary 2100



### Legend

Thames Estuary 2100 Plan Boundary



N.M. Foster et al. / Journal of Environmental Management 126 (2013) 96–104

97

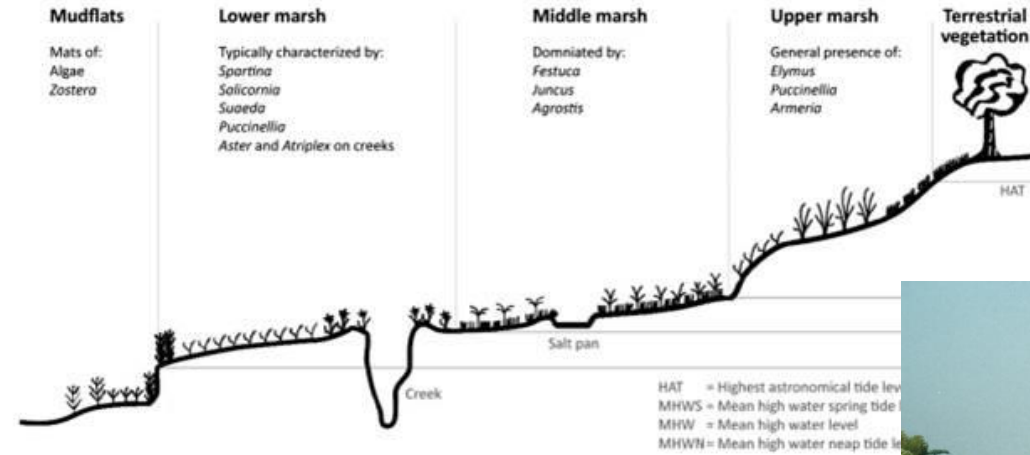
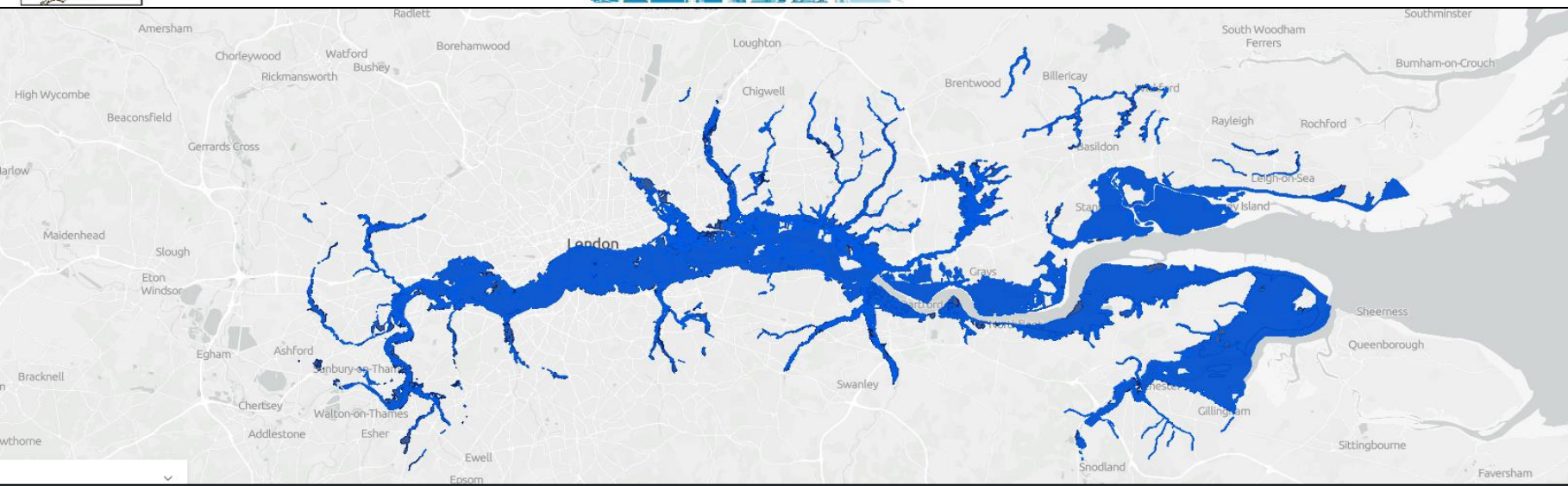


Fig. 1. Indicative UK intertidal mudflat and saltmarsh profile (adapted from: Environment Agency, 1996; Nottage and Robertson, 2006)





# ESTUARY EDGES

ABOUT ESTUARY EDGES

SCROLL DOWN



[estuaryedges.co.uk](http://estuaryedges.co.uk)

*Thames Estuary Partnership - Delivering locally, sharing knowledge and approaches nationally*

# Estuary Edges Guidance for Developers



# Types of Estuary Edges

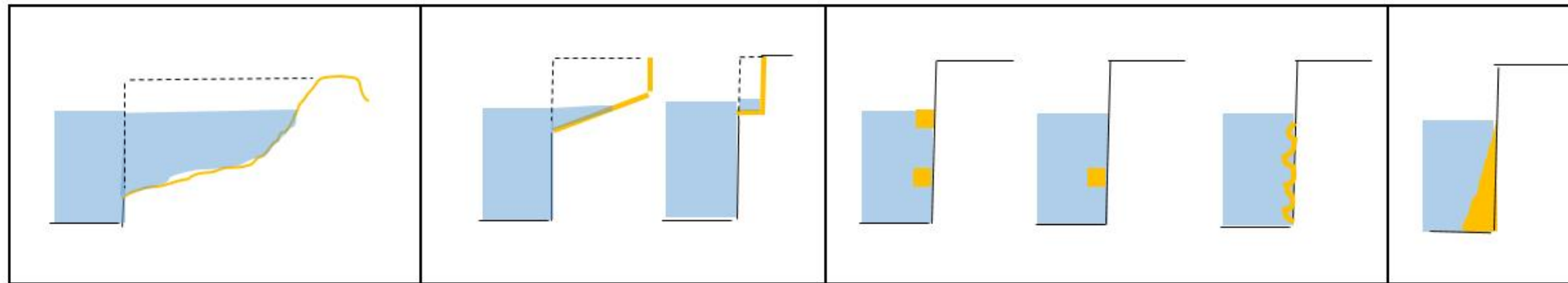


Naturalised set back

Vegetated intertidal terraces

Wall options

Encroachment



# Naturalised Set Back

- Most natural option but not many places in tidal Thames where this can be achieved
- Take out flood defence wall
- Landscape – gradient for vegetation and wildlife
- Planting of reeds
- Now a significant bass nursery area





# Intertidal Vegetated Terraces

- Require space to 'set back' the river wall to allow space to create the terraces
- Have a continuum from the foreshore to the upper terraces without vertical edges
- Have multiple elevations, not just one high level terrace.
- Have deep fill and good drainage.



# Wall Options

- Best urban option
- Bolt on timbers
- Window box style
- Great for flora and fauna

In places, ledge is created and filled with sand to provide location for Kingfishers and Sand Martins to burrow

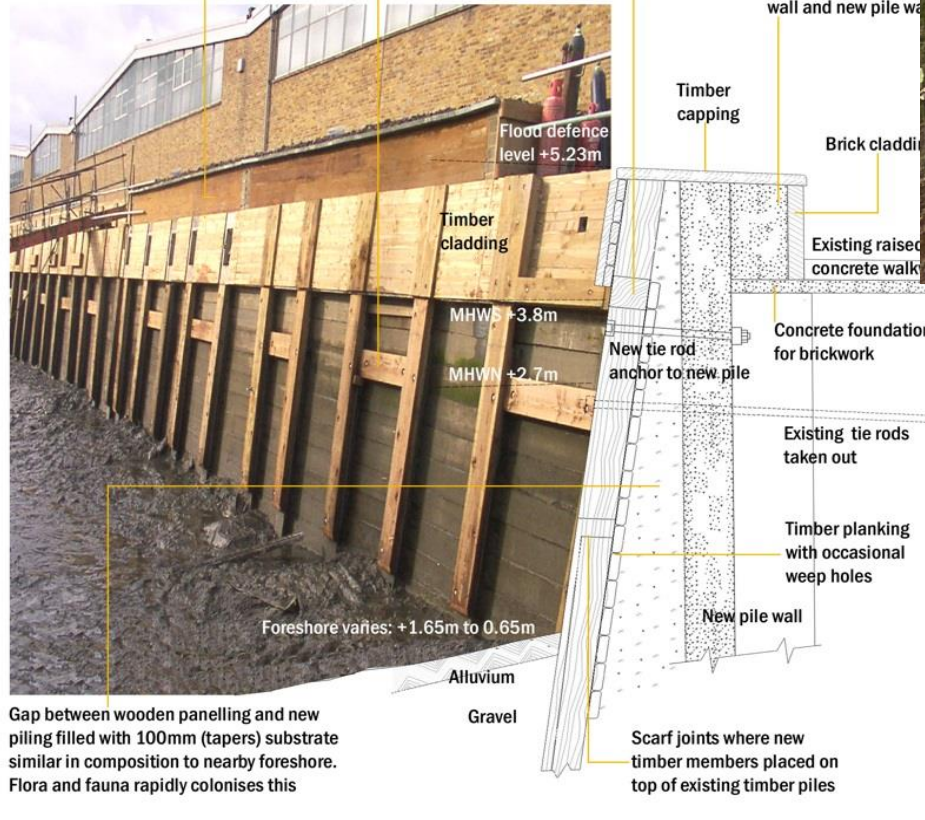
Existing timberwork refurbished with softwood timber

Previous timber capping refixed at lower level

Infill concrete behind timber cladding and between existing timber wall and new pile wall

Wooden 'planter' filled with rubble to encourage natural colonisation

Plastic strips to encourage sediment accretion



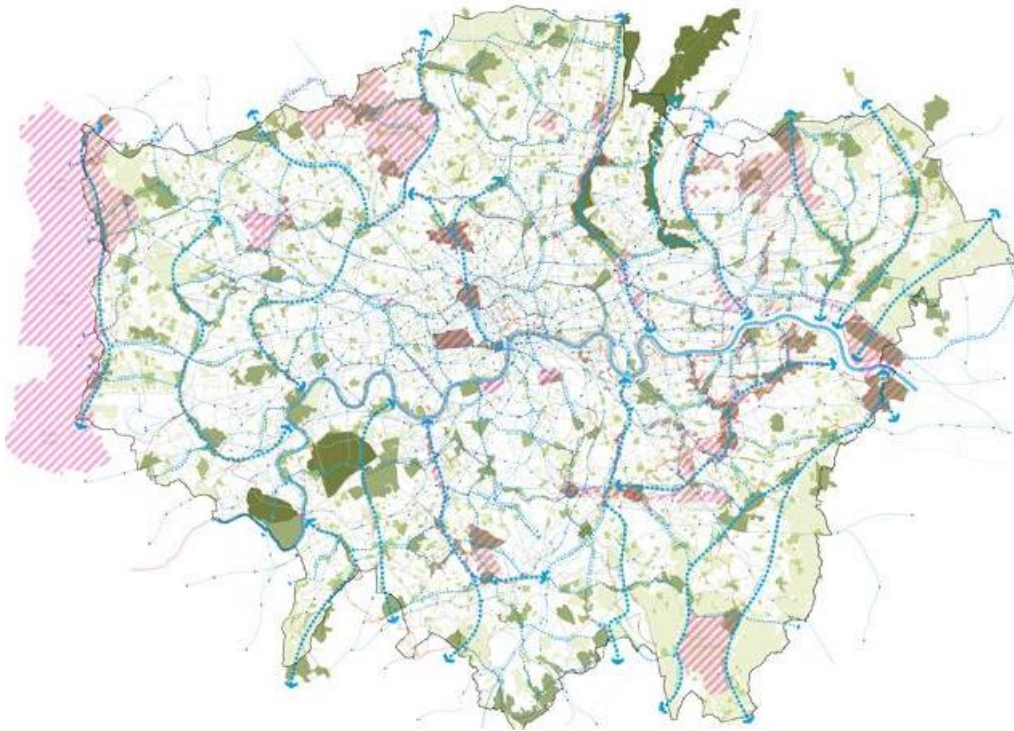
Gap between wooden panelling and new piling filled with 100mm (tapers) substrate similar in composition to nearby foreshore. Flora and fauna rapidly colonises this



# A String of Pearls: replacing lost saltmarsh



- Innovation needed joining up GI and coastal
- GLA Green Infrastructure Partnership
- LNRS



# Royal Wharf: Reconnecting the floodplain in tidal areas



- Surface water drainage under terrace
- Developer led innovation
- Into terrace better NBS

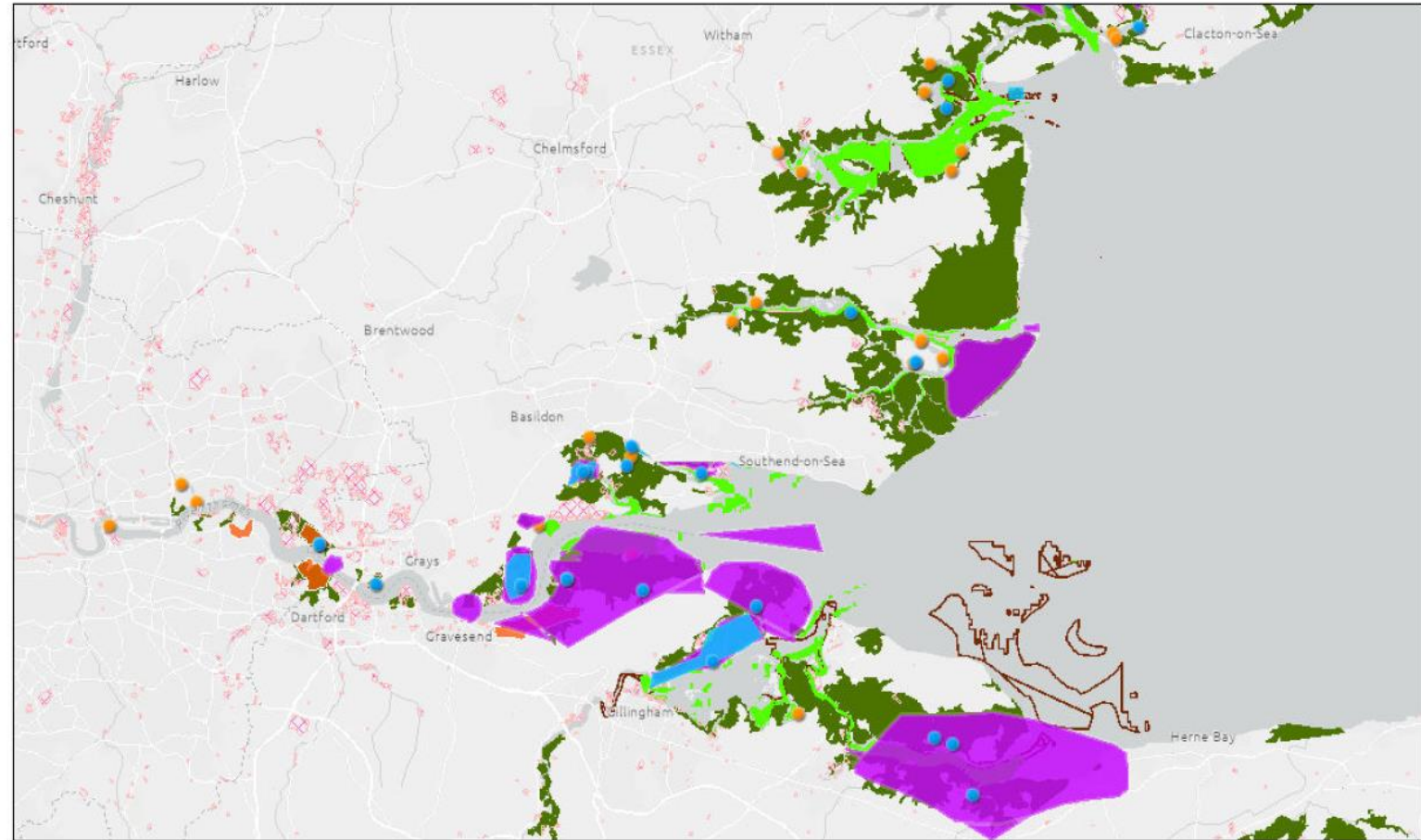


# Regional restoration mapping and beneficial use



## Coastal Habitat Restoration in the Thames

- Coastal habitat restoration planning – 1<sup>st</sup> ground truth of national maps
- Beneficial Use
  - Thames Sustainable Sediment WG
  - EA Sediment Resource Database
  - Solent BUDs
- CaBA ECWG
  - Sediment a key area for catchment to coast collaboration



3/30/2022, 11:13:09 AM

- Current restoration projects (point)
- Current restoration projects (polygon)
- Local knowledge edits to EA habitat potential maps
- Managed Re-alignments
- Fobbing Marshes
- Flood\_Storage
- Historic\_Landfill\_Sites
- Seagrass\_Potential

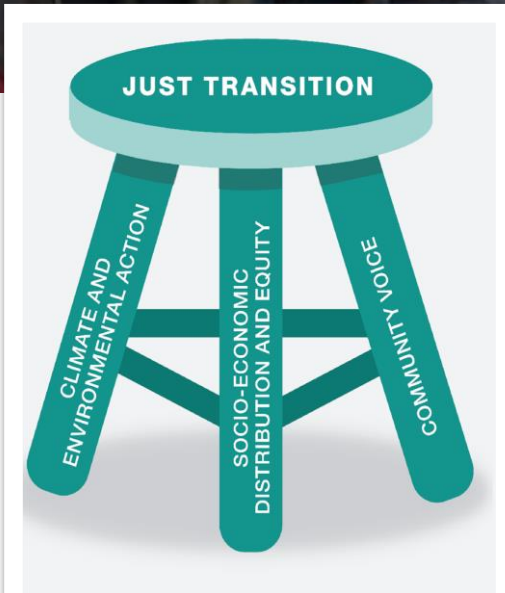
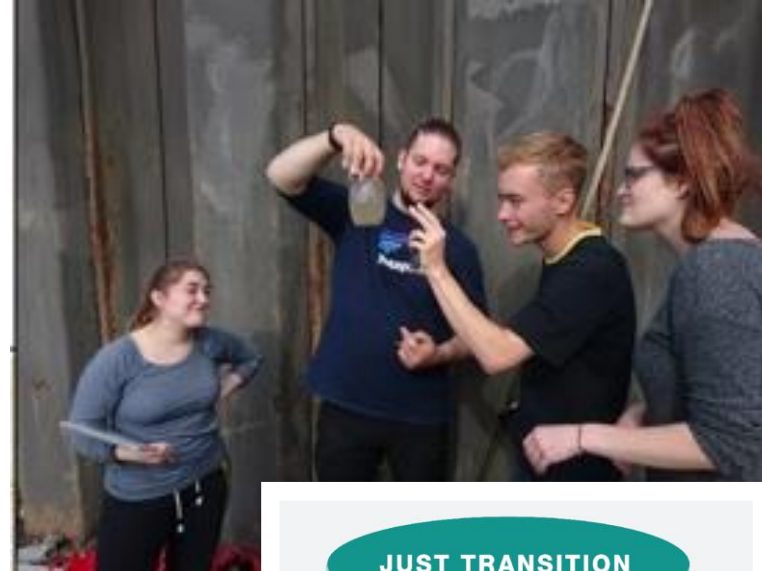
1:577,791  
0 3 6 12 mi  
0 5 10 20 km  
Sources: Esri, HERE, Garmin, FAO, NOAA, USGS, © OpenStreetMap contributors, and the GIS User Community

ZSL & TEP

# Building the evidence through training and skills initiatives



- Increasing employability of young people through transferable and core life skills training
- Kick starting environmental careers
- Addressing lack of diversity in environmental sectors
- Strong environmental message
- Reconnecting people to nature





Find out more

## BLUE CONNECTIONS

**ARE YOU AGED 16-25?**

**ARE YOU NOT IN EDUCATION EMPLOYMENT OR TRAINING?**

Increase your employability, access our network and gain new opportunities.

The Thames Estuary Partnership (TEP) have a whole host of life-long skills which are transferable into any industry, which can be learned through an environmental project and be a foundation for entry into green jobs.

We are piloting a modular training programme in Barking and Dagenham. Using the River Roding, Barking Creek and the tidal Thames as the classroom, the modular training programme has both virtual and hands-on learning opportunities.

The programme runs from:  
21st November 2022 to 17th February 2023.

16-25 year olds (Not in Education Employment or Training) and adult learners can apply:  
Deadline for applications is 18th November 2022.

**The Training Programme**

**The life-long skills, modular programme includes:**

- Introduction to MS Office
- Introduction to Data Science
- Introduction to Geographic Information System (GIS) Science
- Introduction to Communication

**The optional module 'kick start into an environmental career' includes:**

- Introduction to an Environmental Career
- Introduction to the Thames Estuary

**Benefits of training with TEP include:**

- Increase your employability
- Access to TEP Network – over 1000 contacts
- Some elements of the course are endorsed by Institute of Environmental Sciences and Institute of Fisheries Management
- Learn about careers and opportunities along and on the Thames
- Careers Networking event in February 2023

# Joint Thames Strategies Refresh

New collaborative 4 year project starting 2023



## Updating planning policy

- Refresh of Joint Thames Strategies
- Building on City of London Riverside Strategy
- Flood defence and wider benefits:
- Public realm, access, enhancing biodiversity
- Local Council, local business and community participative decision making
- Local Plan adoption triggers
- Developer delivery & funding
- Partnership funding models

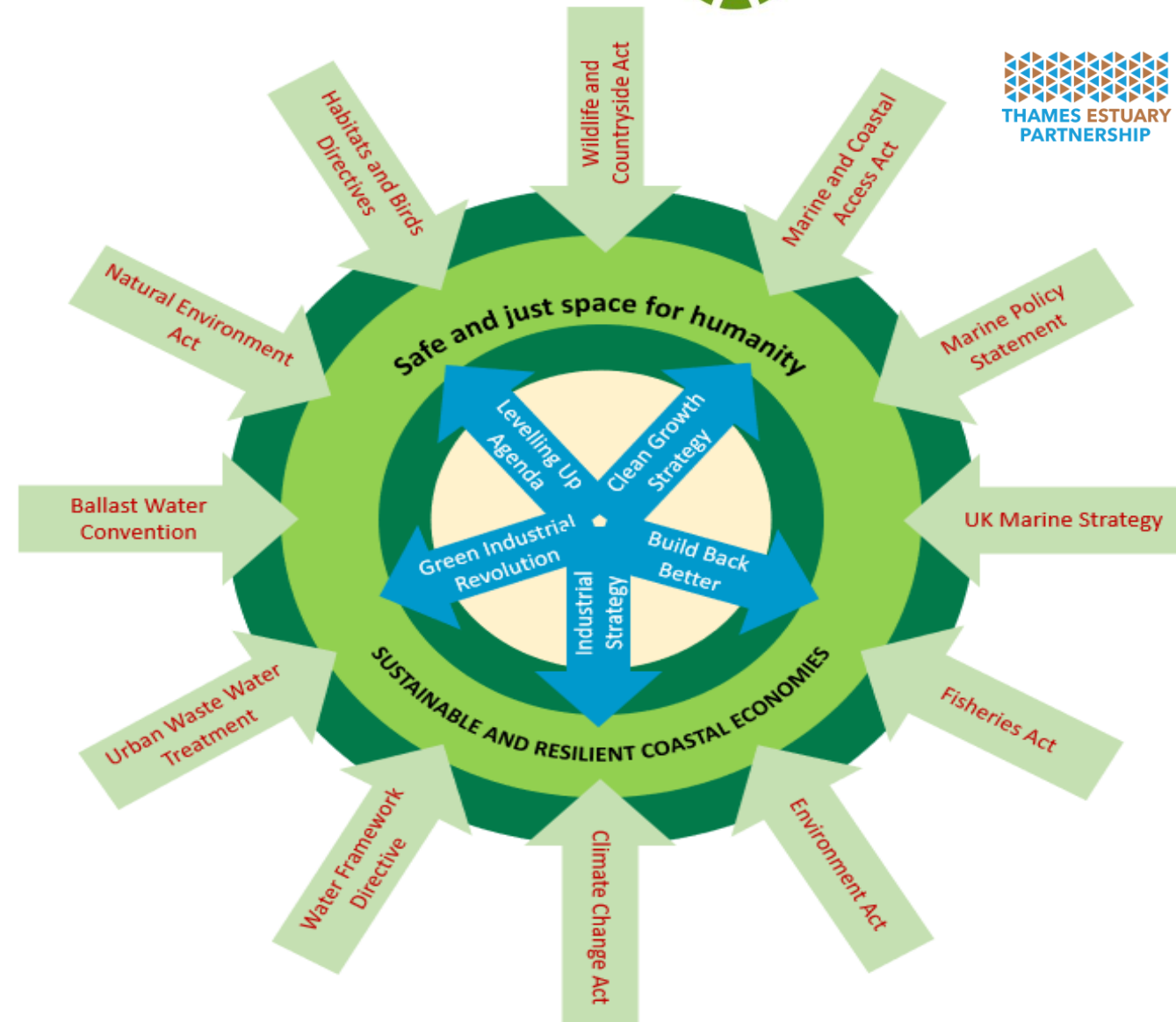


# Restoring Meadows, Marsh and Reef (ReMeMaRe)



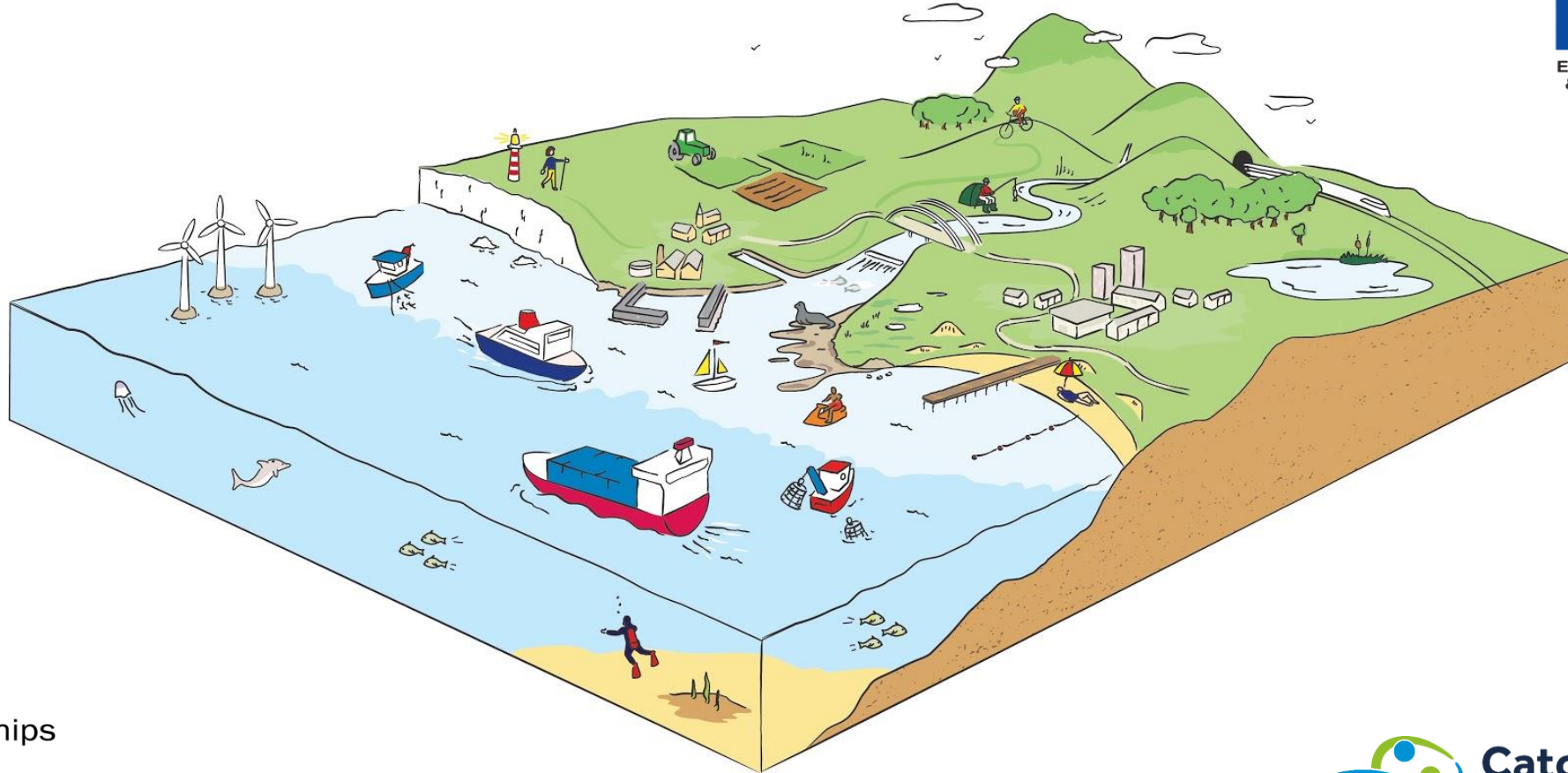
Scoping approaches and opportunities for coastal habitat restoration informing the 25 Year Environment Plan:

- Climate resilience through integrating Local Economic Plans, SMP and Marine Plans
- Policy drivers for coastal habitat restoration across socio economic and environmental policies
- Opportunity mapping, projects and campaigns underway through CEPs and others linking into the Strategy
- Regional and/or local coastal habitat restoration planning
- Contributing to mNCEA and emerging Marine Recovery linked to NRS

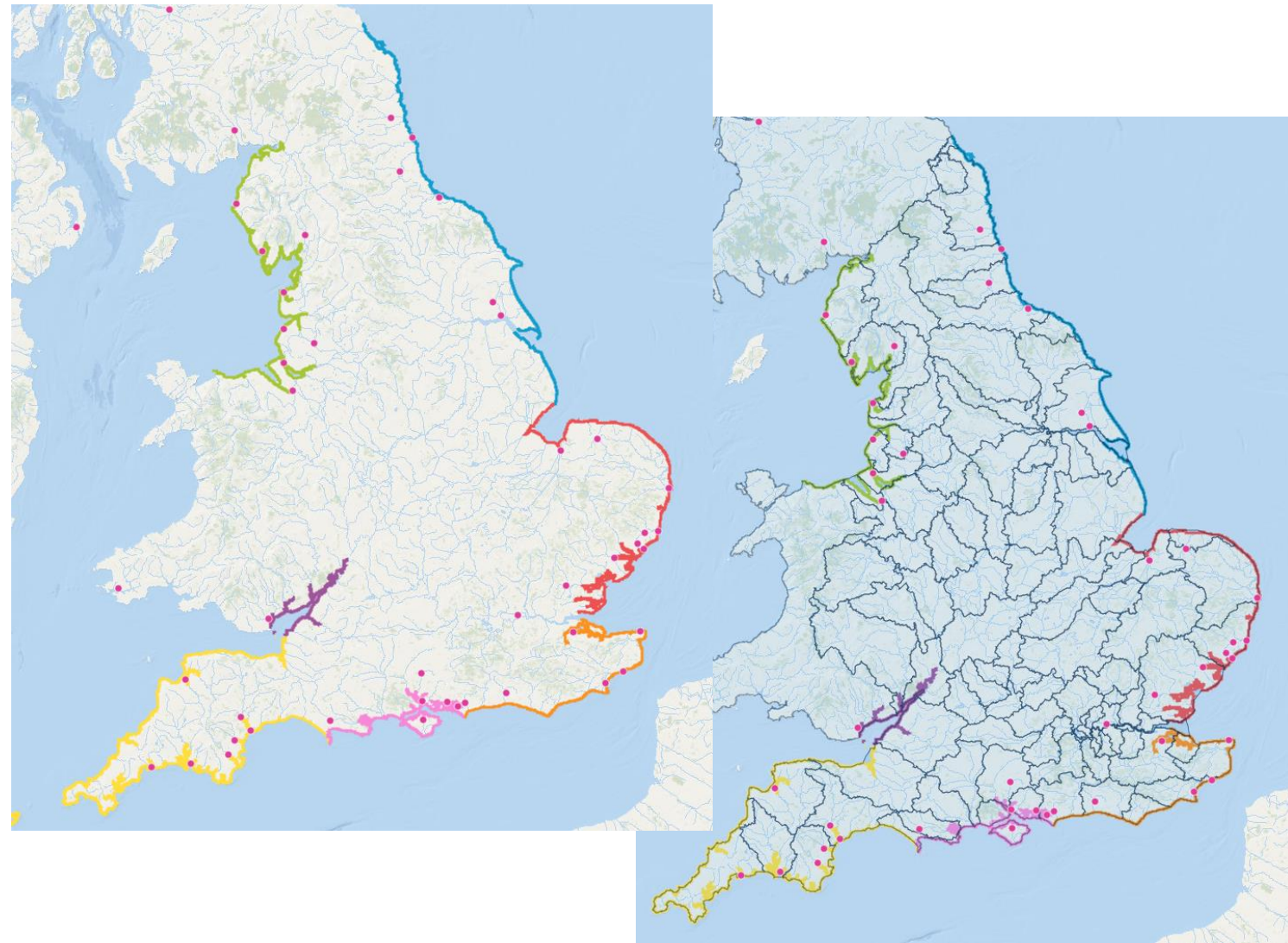
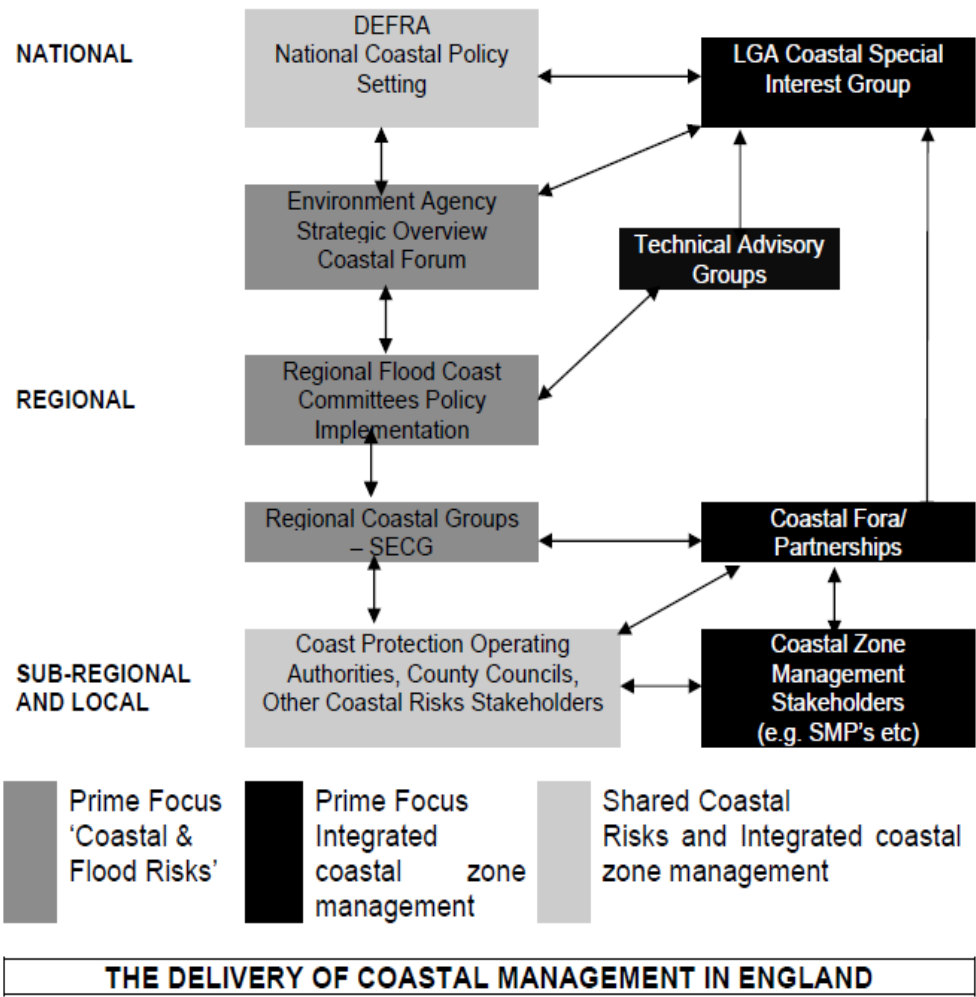




# WAMM – Wholescape Approach to Marine Management



# NBS/FCERM Delivery Mechanisms – CGN, CPN, CaBA

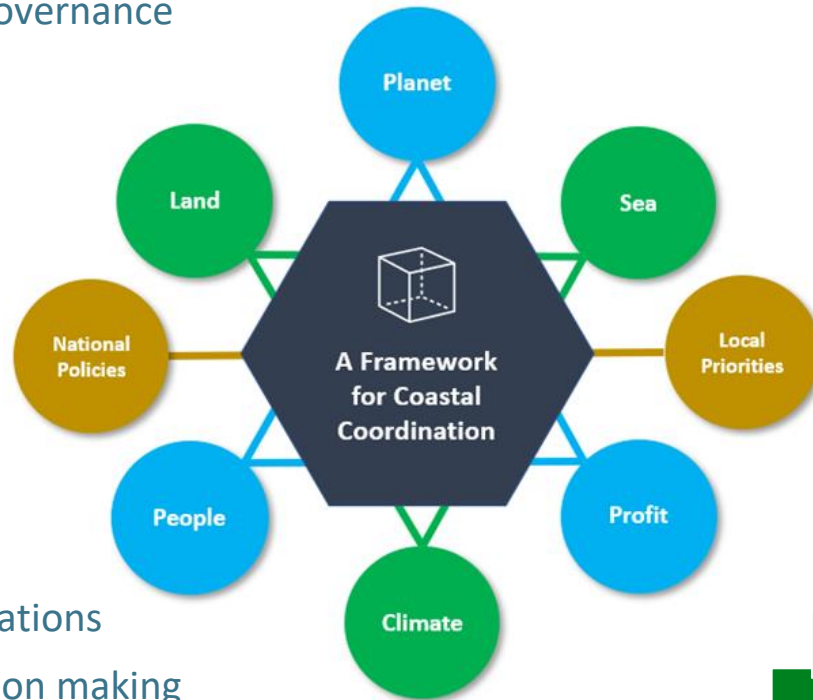


# Championing Coastal Coordination (3Cs)

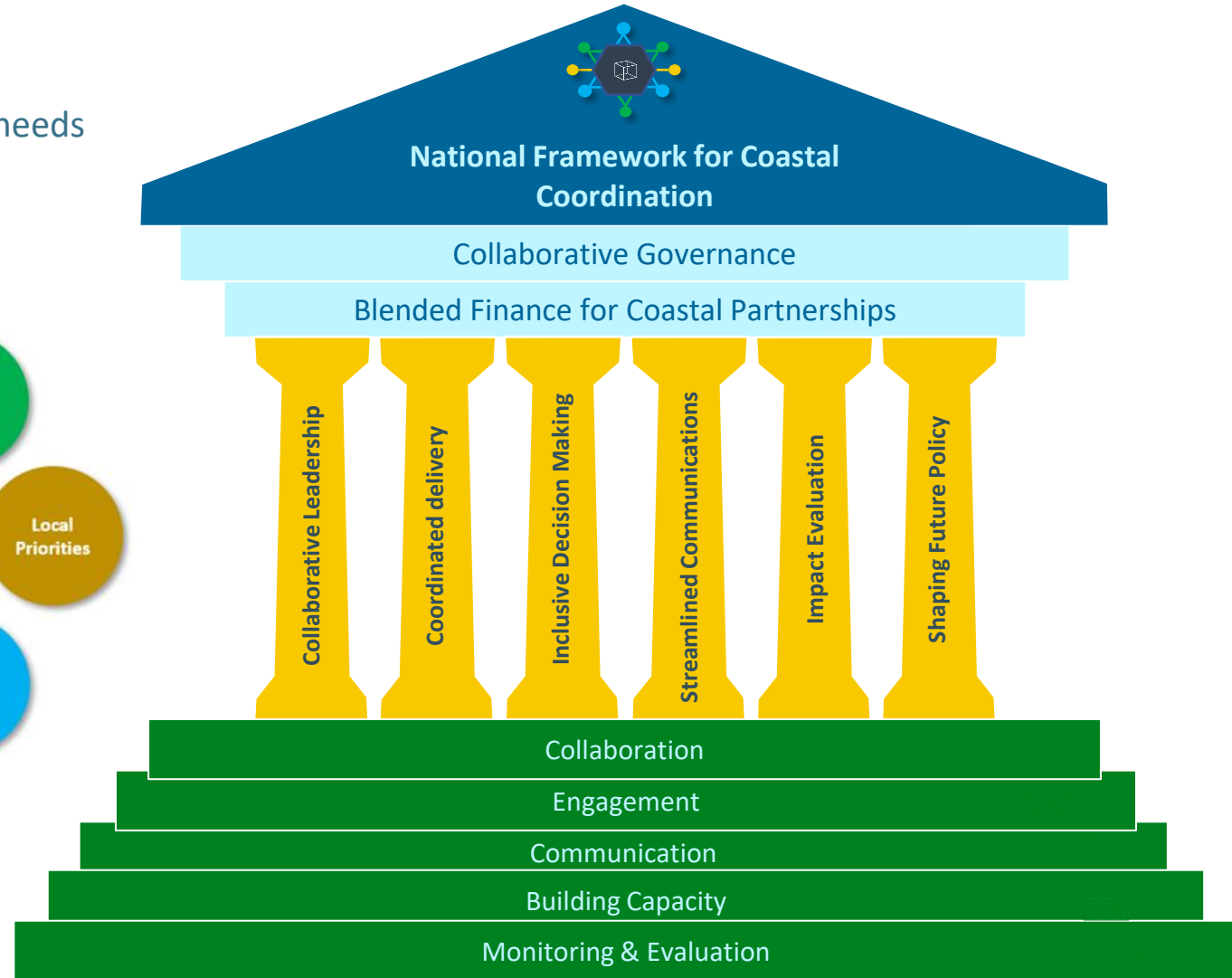
## A National Framework for Coastal Collaboration



- Co-designing the framework with public, private and civic organisations
- Integrating delivery across socio-economic and environmental needs and targets
- Building collaborative governance



- Building capacity
- Streamlining communications
- Enabling inclusive decision making
- Advocating to shape future policies
- Improving evidence and evaluation of partnership working



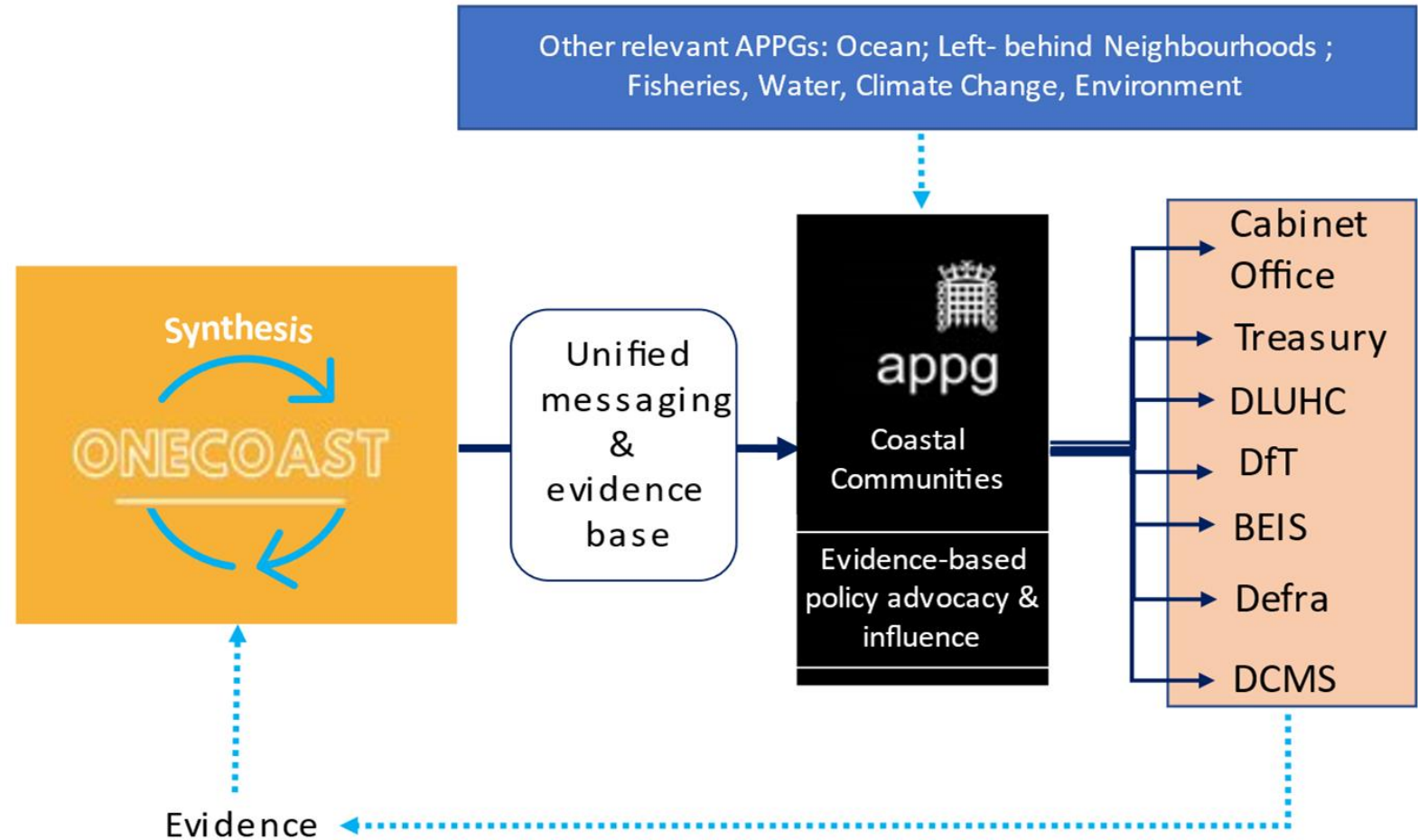
# OneCoast

A public, private and civic consortia working together to enable a united voice to support our coastal communities and environment to be more resilient, sustainable and thrive

## OneCoast Priorities

The OneCoast partnership has come together to raise the profile of the Coast and ask the UK Government to:

- Appoint a dedicated Minister for the Coast who can work across Government to deliver change
- Reinststate the Whitehall cross-departmental working group for Coast
- Welcome the government's support for a Coastal Taskforce
- Provide direct investment and support into the Coast's key work streams and activities to aid recovery.



Thank you for listening...



[a.pryor@ucl.ac.uk](mailto:a.pryor@ucl.ac.uk)

[www.thamesestuarypartnership.org](http://www.thamesestuarypartnership.org)

[www.coastalpartnershipsnetwork.org.uk](http://www.coastalpartnershipsnetwork.org.uk)