

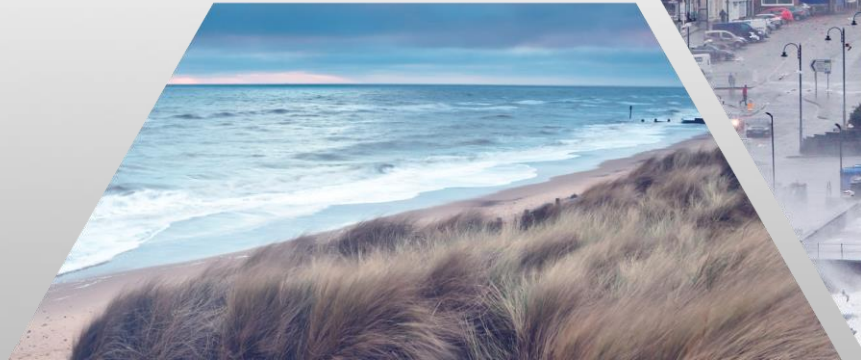


2 Seas Mers Zeeën SARCC

European Regional Development Fund

Engaging the public, a key for NBS mainstreaming

SARCC Final Conference

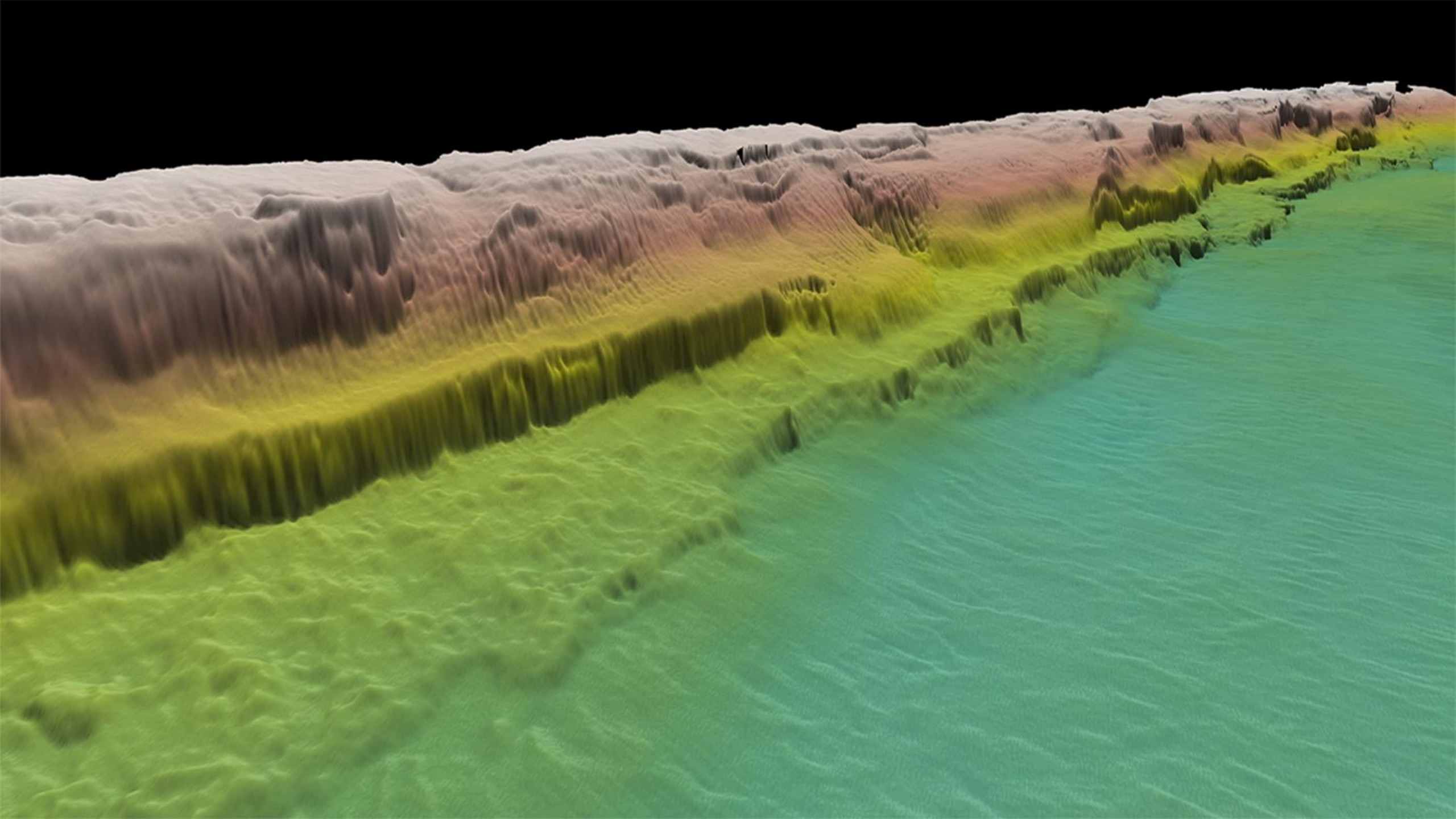


The Long Durée

- A review of the long durée demonstrates how human and natural influences contribute to the evolution of the coastline.
- Historical, artistic and archaeological information can provide a visual narrative of the changing coast.
- This helps stakeholders, coastal managers and decision makers consider solutions that work with long-term natural processes.





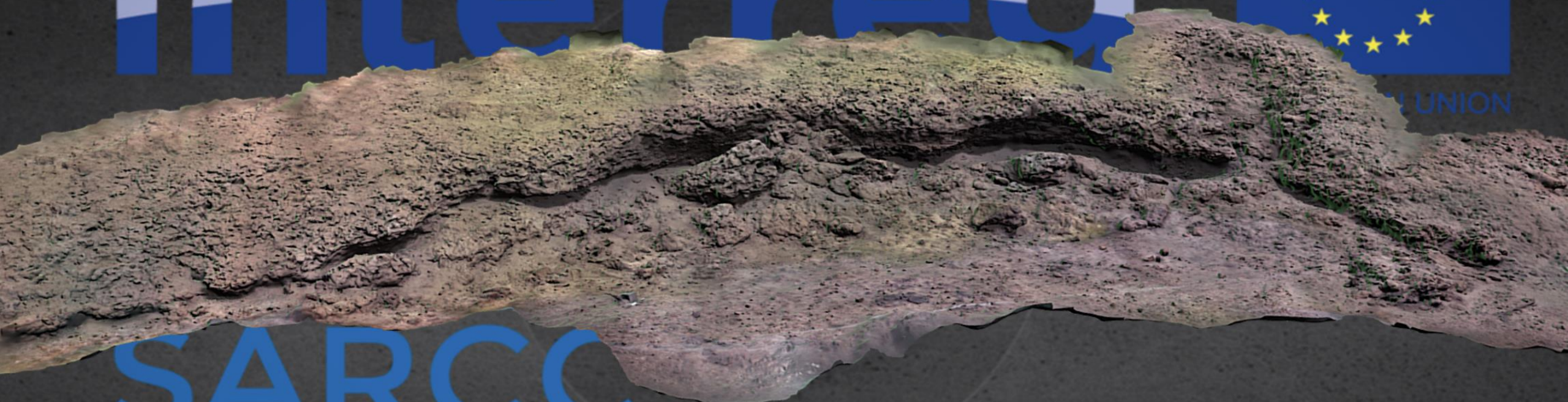




Interrea

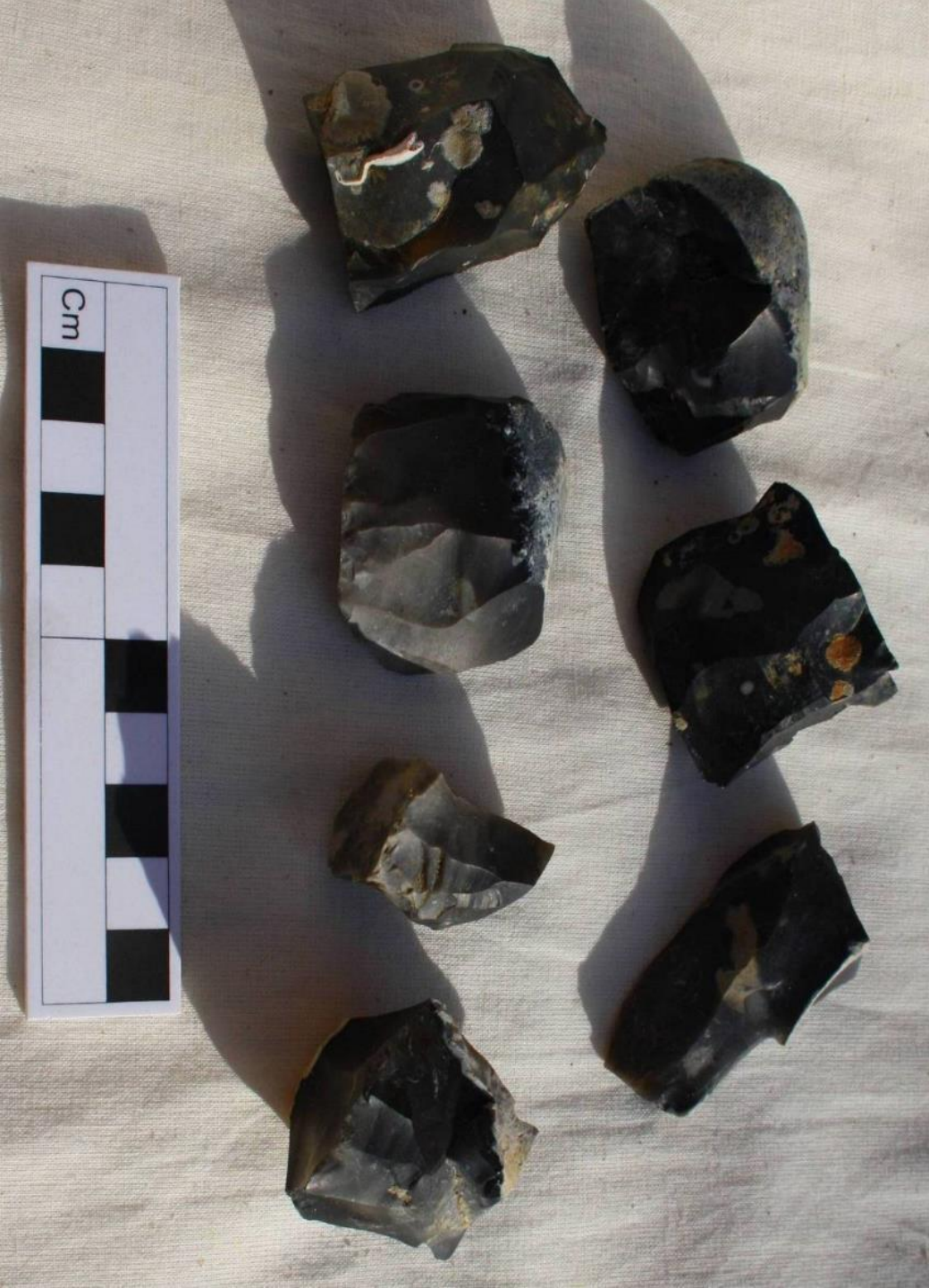


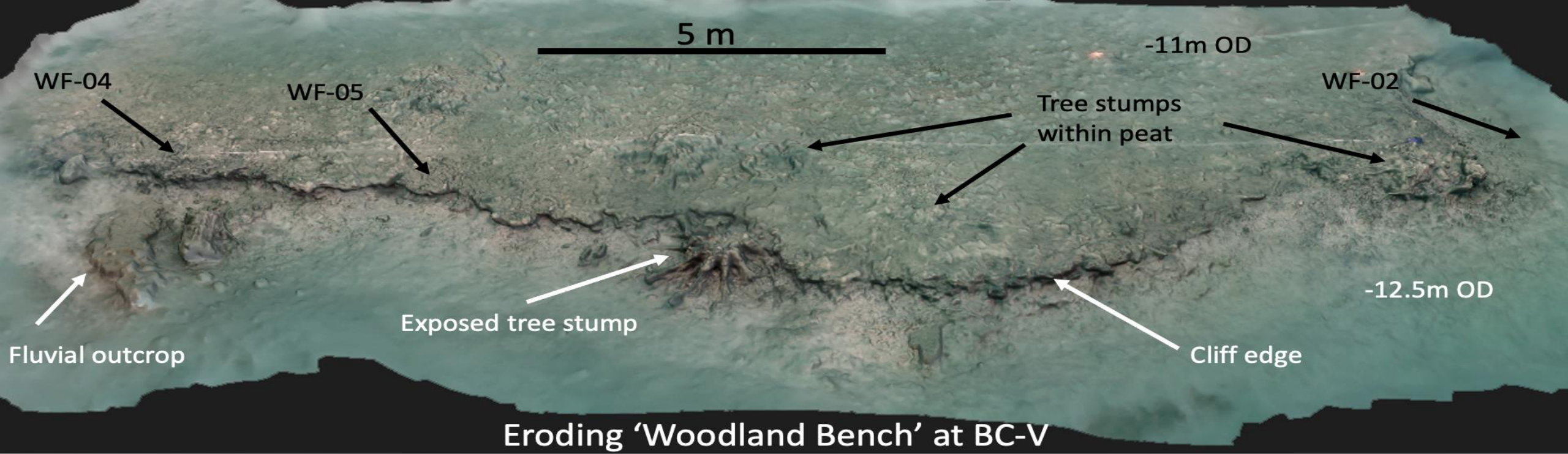
UNION

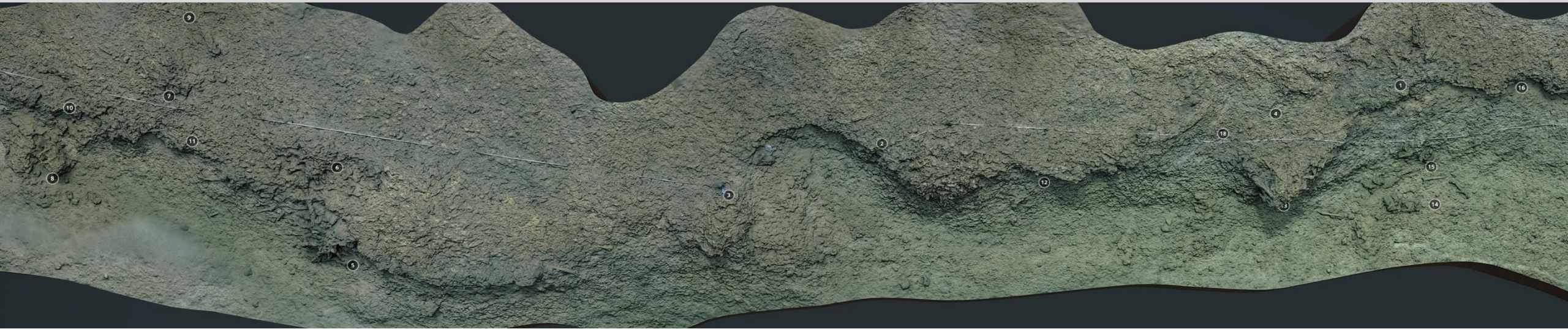


SARCC

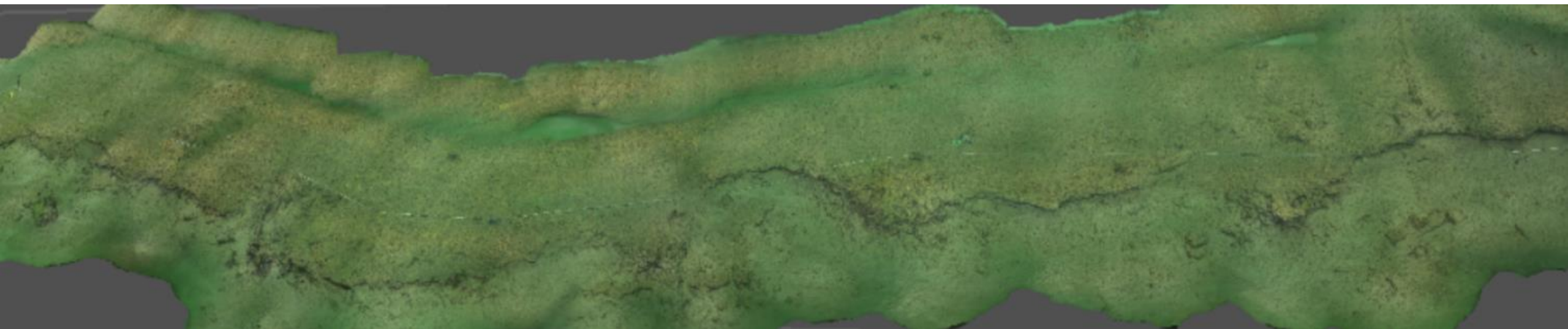






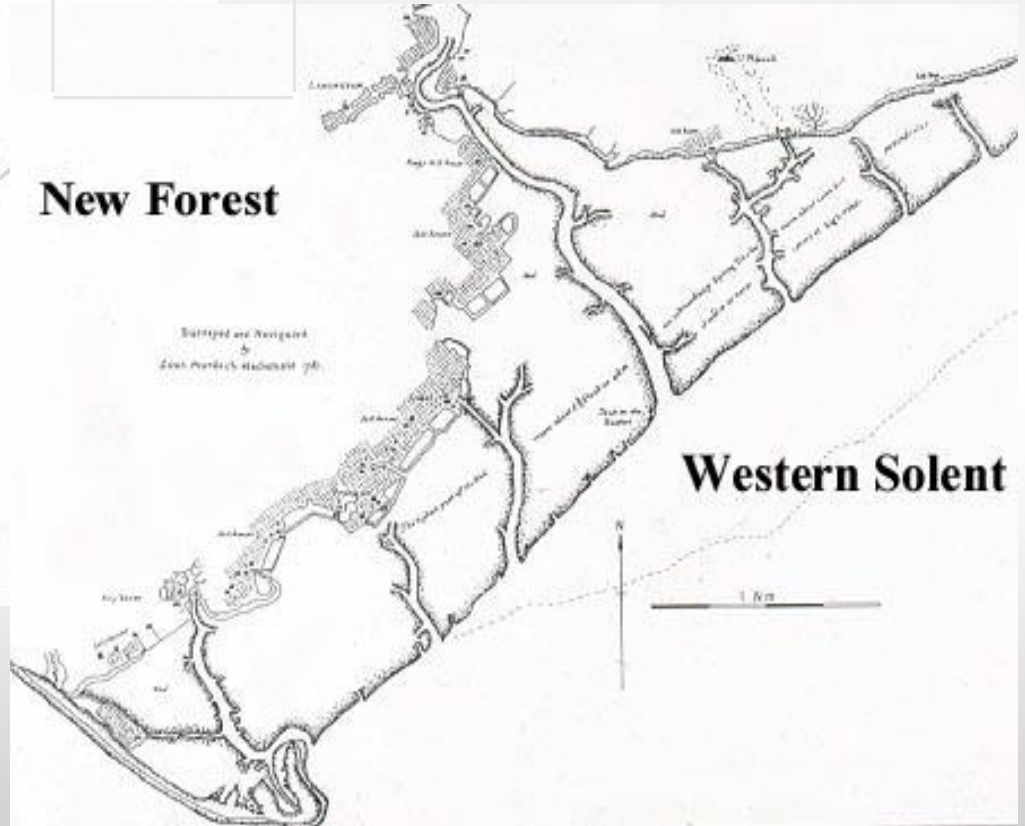
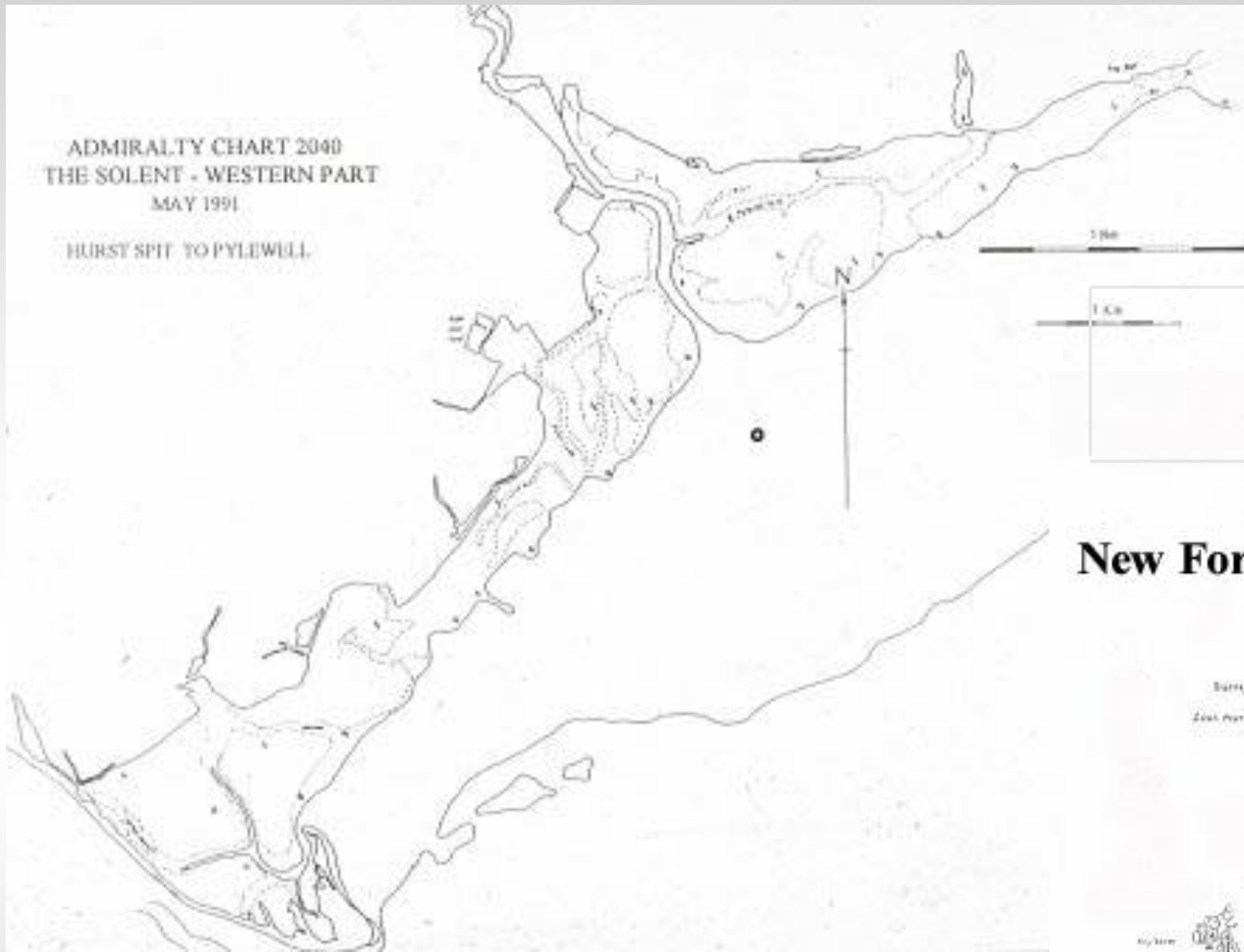


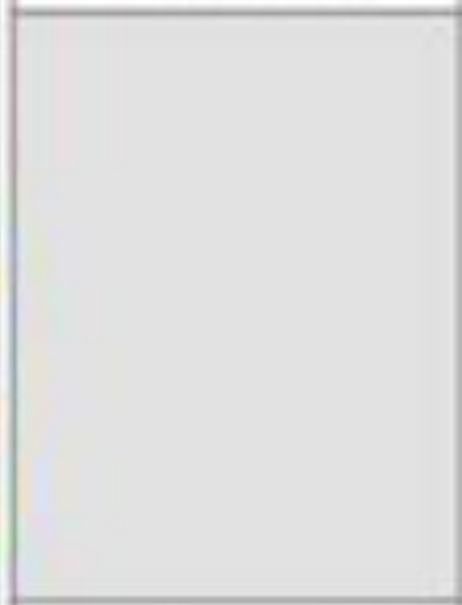
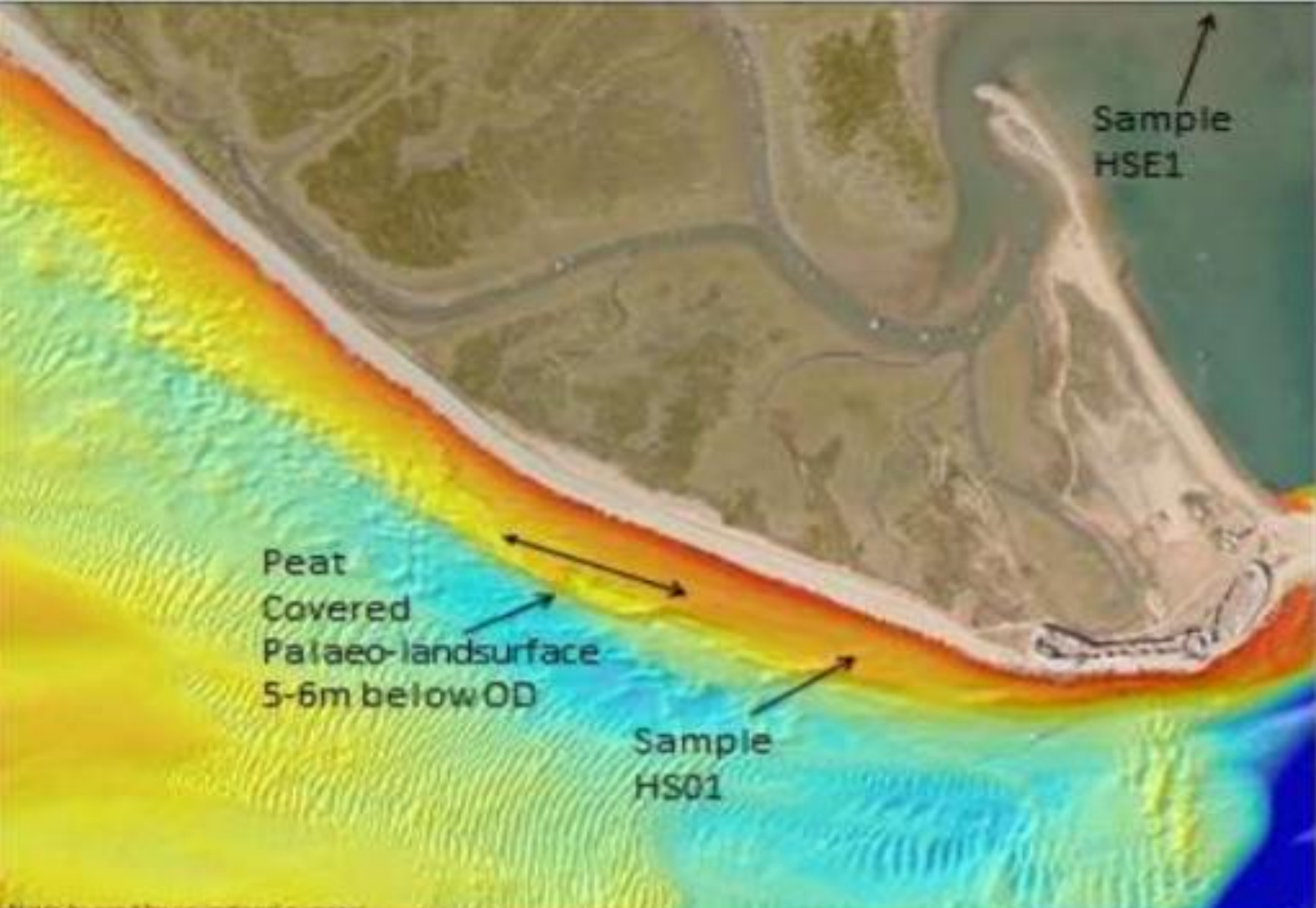
Bouldnor Cliff V 2021



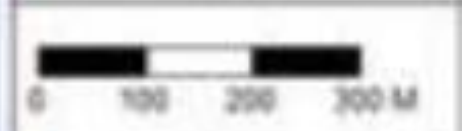
Bouldnor Cliff V 2022







New Photography 2013








255 – 418 cal AD





An archaeological site showing a row of dark, charred wooden posts or pilings. A black and white scale bar is placed horizontally across the site for reference. The ground is a mix of dark soil and light-colored rocks. A body of water is visible on the right side of the image.

1502 – 1401 cal BC





3026 – 3211 cal BC

Interreg



EUROPEAN UNION

2014-2020

SARAJEVO

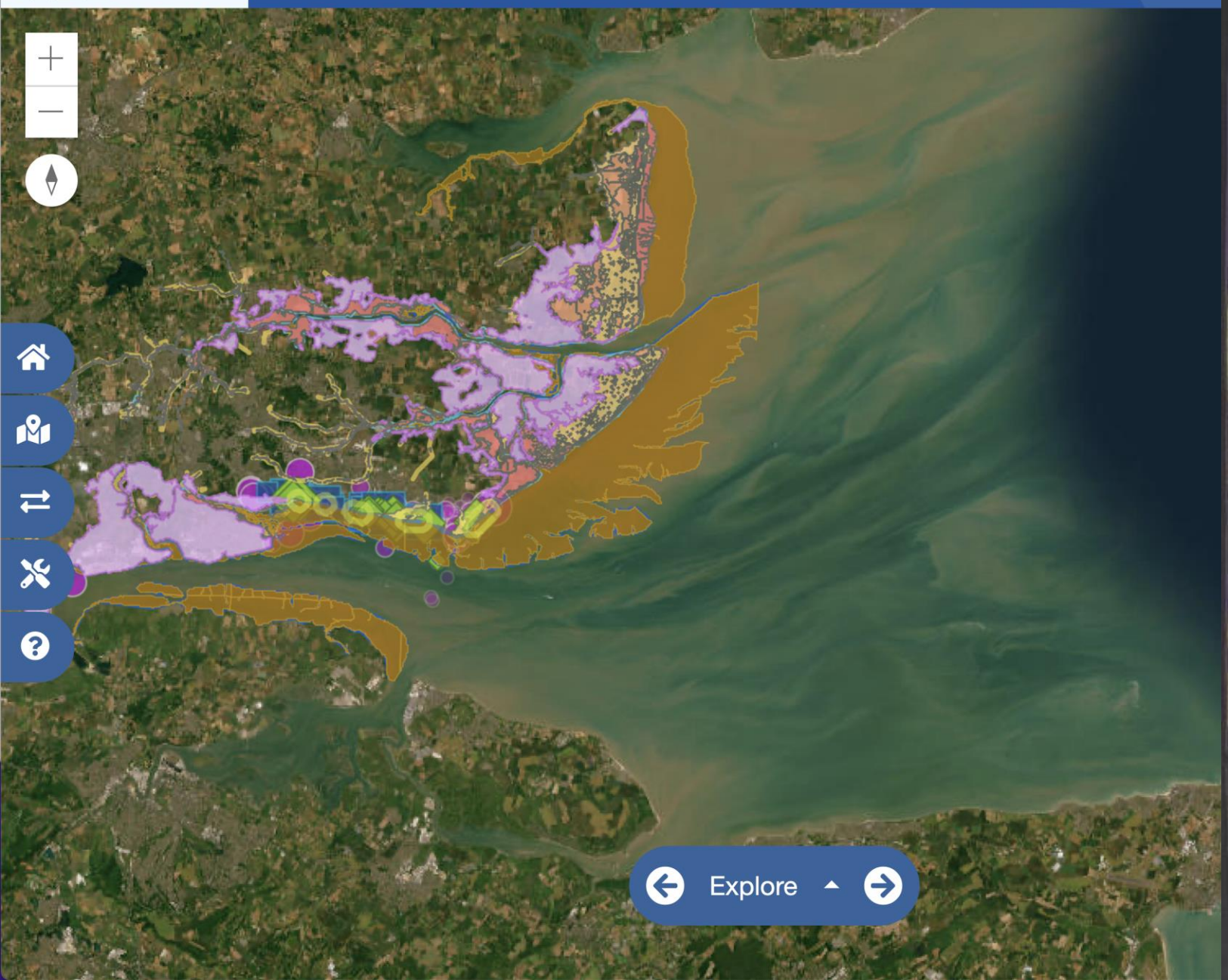


Newlyn: implications of grey infrastructure



Project context - Newlyn





Mouth of the river
Thames c. 1544

Landslip Cliff town c1870, Charles Jayne (1815/16-1891)



1852



1885



1900





het Nieuwland

het

Mer

et Septembre

Canal de
Gravelines

Fort St.
Philips

Sout Keeten

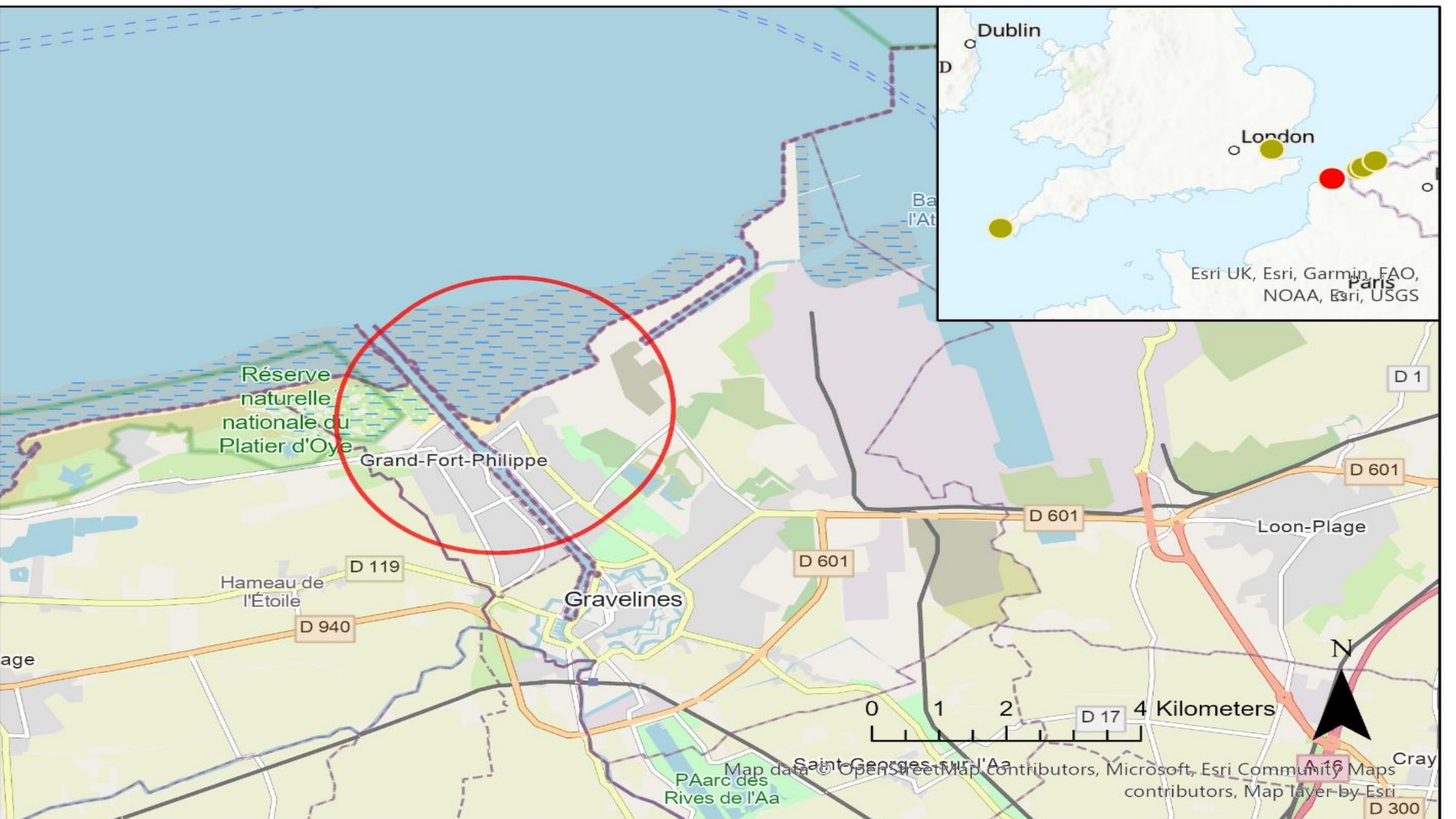
Cales Poort
Ecluse

GRAVELINES

Ecluse

S. George

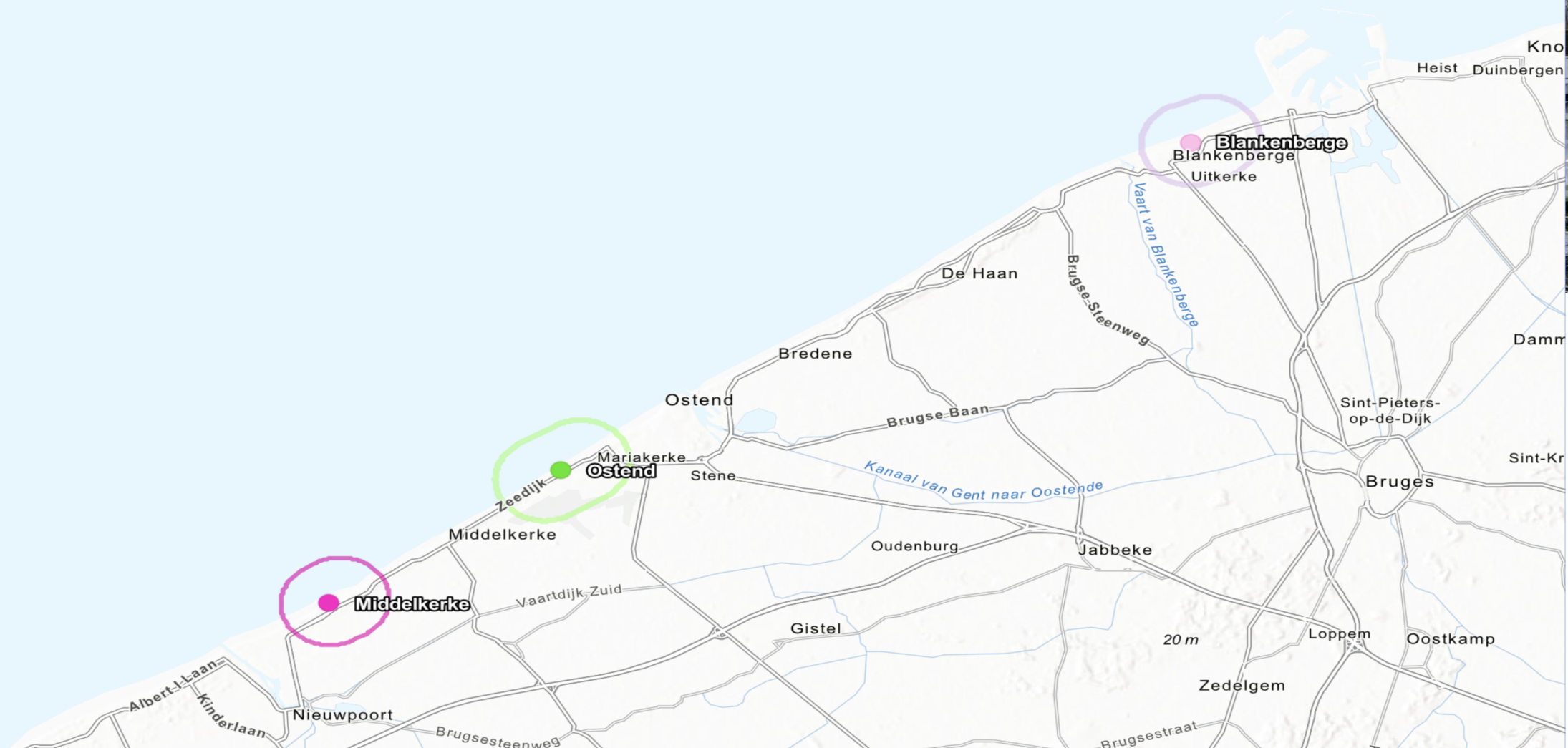
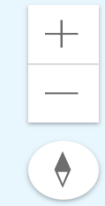
N. D. a

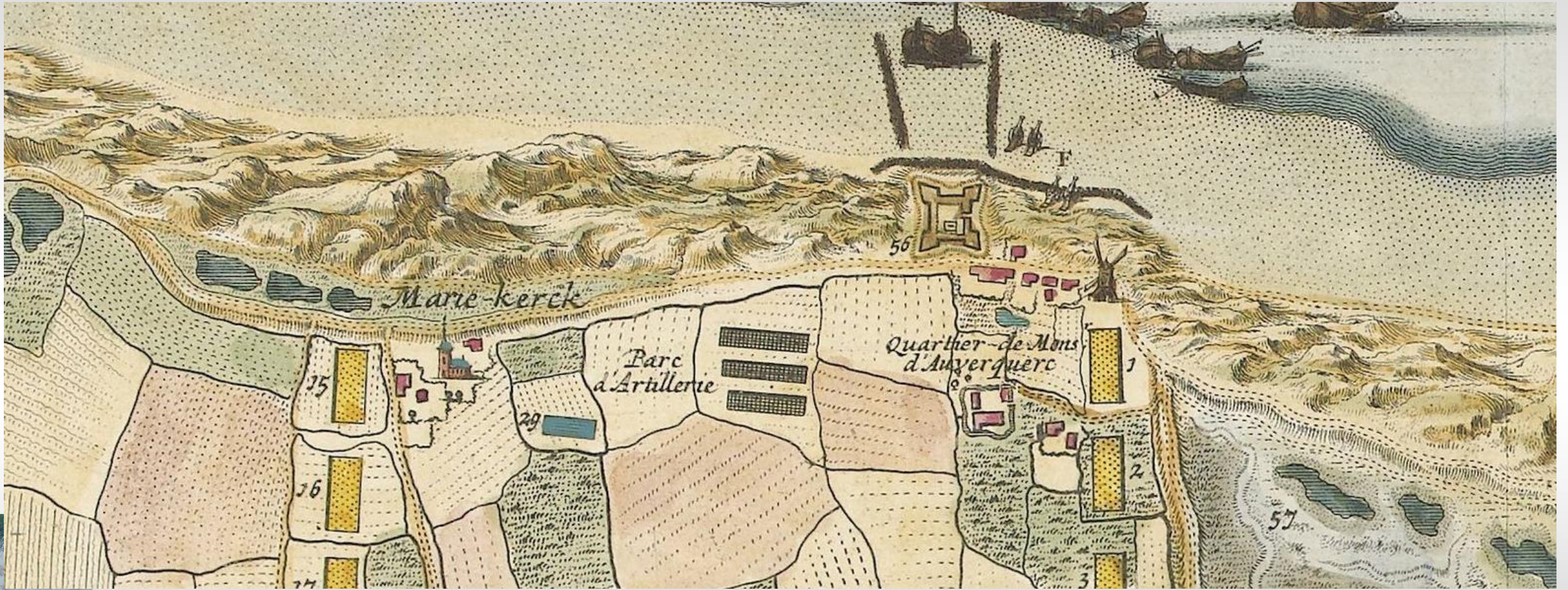


Spontaneous
vegetation
(seagrass)



<https://sarcc.maritimearchaeologytrust.org>

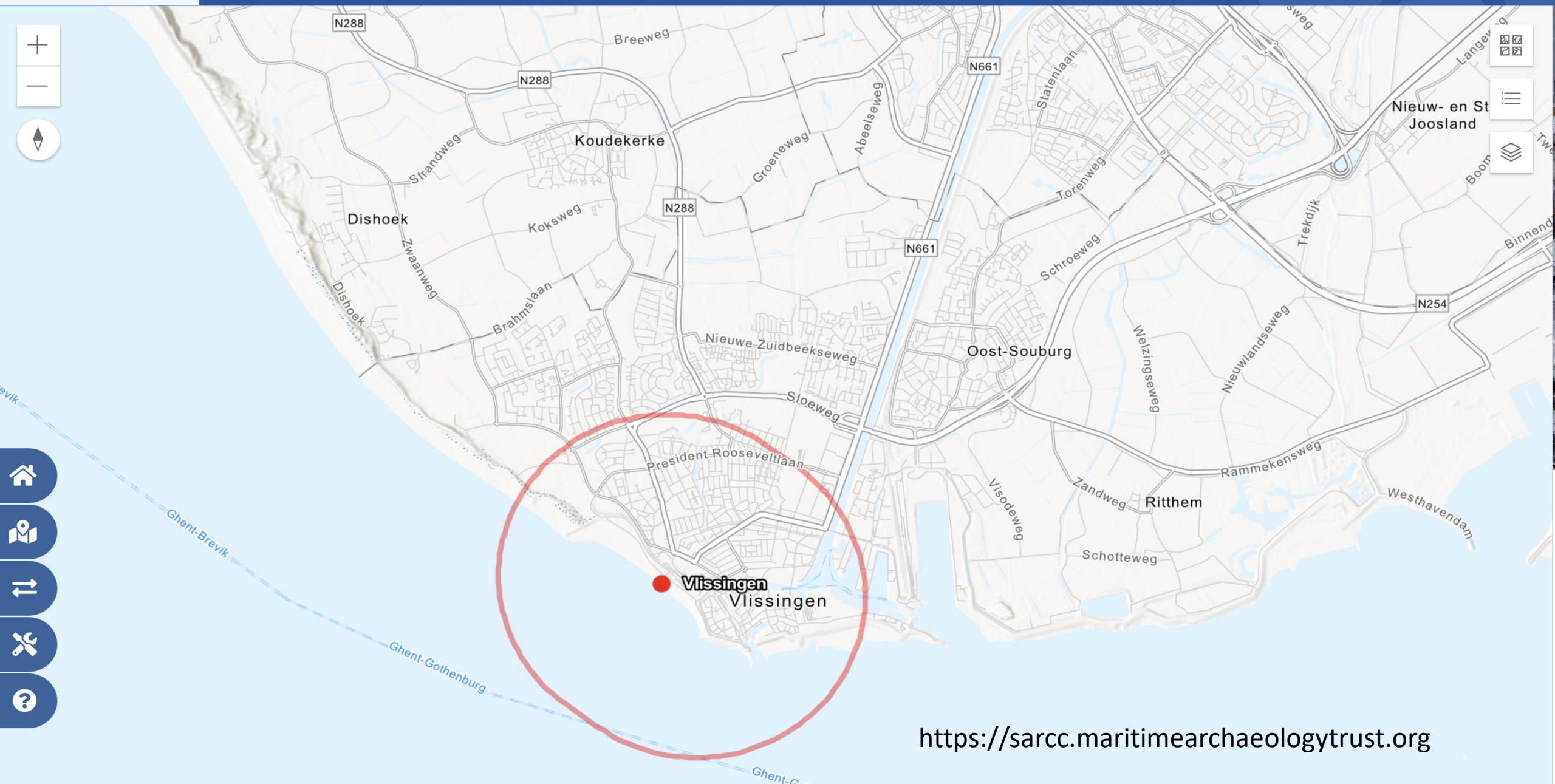






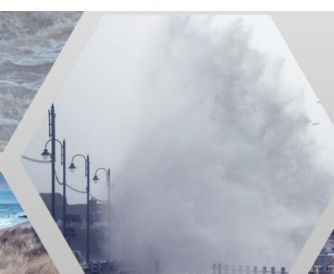
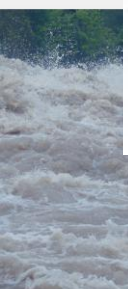








On St Elisabeth's day in the early 15th and repeatedly up to the 18th century and beyond





Noordzee Boulevard bij Storm - Vlissingen.

Publications

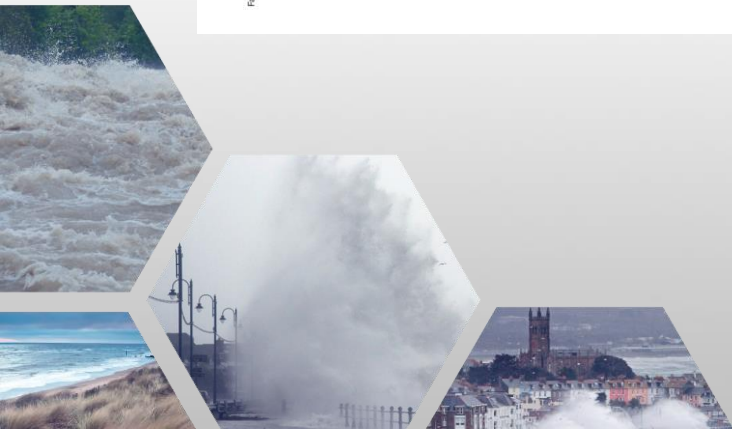


*The value of historical
and archaeological
data in understanding
patterns of long term
coastal change*

*Garry Momber
Julie Satchell
Jan Gillespie
Brandon Mason
Jasmine Noble-Shelly*

WP1 Guidance Booklet
providing long term
context for stakeholders

WP2 Guidance Booklet
for coastal managers
and decision makers



Education



Climate Change and Flooding Assembly

Registered charity number 1153740



Waves in the sea become rougher and higher



When lots of heavy rain falls quickly, it can cause flooding





2 Seas Mers Zeeën SARCC

European Regional Development Fund



SARCC EDUCATION RESOURCES

RESOURCE GUIDE FOR TEACHERS



Pilots — SARCC - Sustainable And Resilient Coastal Cities

Interreg
2 Seas Mers Zeeën
SARCC

Southend-on-Sea, Oostende, Vlissingen, The Solent, Gravelines, Middelkerke, Blankenberge, Newlyn

SARCC Pilot Areas

To visit our visualisation tool please follow our QR code or visit twitter.com/SARCCeu





SARCC WORK BOOK

SARCC - Sustainable And Resilient Coastal Cities
WWW.SARCC.EU



Page	TABLE OF CONTENTS
2 - 3	Lesson 6 – Changing Coastlines
4 - 6	Lesson 7 – The Story Of Humans Along The Coastline
7 - 9	Lesson 8 – Past Changes On The Sea Floor
10	Ocean Literacy Log
11	Summary Cards
12	Work Book Review
13	Links To Resources
14	References



<https://bit.ly/3VEfpwW>

Visit the Visualisation Tool as you work through this Work Book.



Lesson 6 Changing Coastlines

KEY FACTS

11,500 years ago the global oceans were about 40m lower than today. When the climate warmed, the ice sheets melted and sea level rose rapidly. Within 6,000 years there was a rise of around 40m. This had **three** significant consequences for the SARCC pilot areas that are being studied.



Approximately 8,000 years ago, the ice was melting and sea levels rose.

COASTLINE EROSION EXPERIMENT INSTRUCTIONS

Materials needed for this experiment.

- Medium sized container
- Sand
- Water
- Water bottle

1. Place sand on one side of the pan. Make it a steep slope. Place some items such as small stones half way up the slope.
2. Pour water into the other side until it's halfway up your sand slope.
3. Place your water bottle on the end with the water. Push the bottle down to create small waves. Do this consistently and evenly for 1 minute.
4. You may make your waves bigger, or keep them the same size. Make observations and note them below. What has happened to the sand and your items?
5. Repeat this experiment without any items on the slope and note the differences.

List below your observations of the Coastline Erosion Experiment.

Go to page 10 and start building your ocean literacy vocabulary log.



Interreg 2 Seas Mers Zeeën SARCC Sustainable and Resilient Coastal Cities

Sustainable And Resilient Coastal Cities
Interreg 2 Seas Mers Zeeën SARCC
Mainstreaming nature-based solutions management and policy making across
4 Countries 7 Pilot Sites 14 Partners
www.sarcc.eu

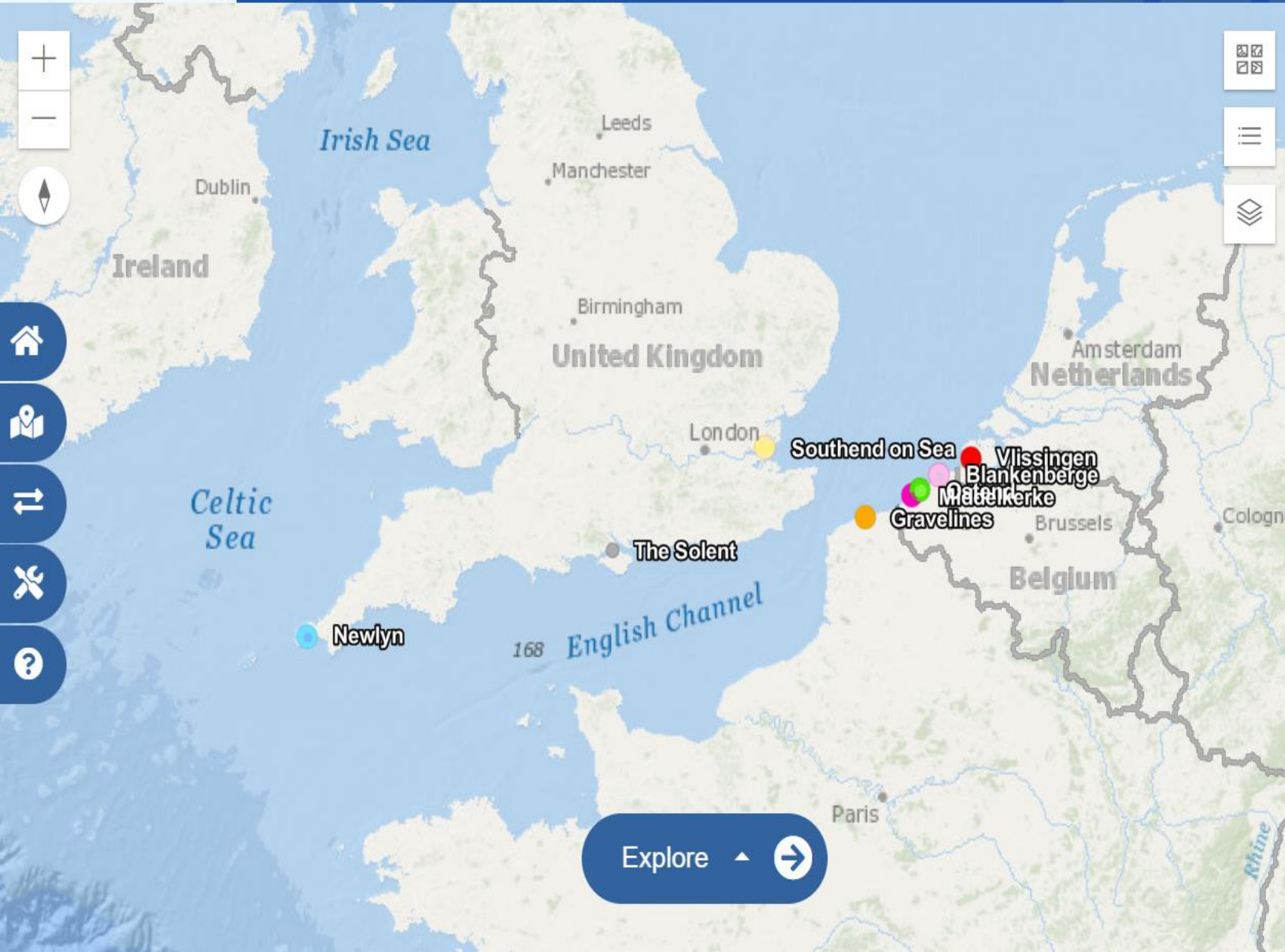
NATURE
Interreg 2 Seas Mers Zeeën SARCC
European Regional Development Fund
WWW.SARCC.EU

interreg 2 Seas Mers Zeeën SARCC
Gravelines
biology

Discovery Bus Road Show

Enjoyed by almost half a million people





Improving the understanding of Nature-Based Solutions in coastal cities

Why is this project required?

Mean sea level rise (SLR) could increase by **1.5m-2.5m by 2100**, which would see damage caused by coastal flooding in Europe increase from €1.25bn per annum



Sustainable and Resilient Coastal Cities

Archaeology and Coastal Change

UNESCO Meeting on Mobilising Civil Society and the Scientific Community for the Cultural Heritage of the Oceans.

Underwater Cultural Heritage and Non Government Organisations

May 24th 2022

Garry Momber, Brandon Mason and Julie Satchell

Archaeology and Coastal Change

Isle of Wight Natural
Archaeological S
29 March 20

longue durée Maritime Atlas

Julie Satchell, Jan Gillespie,
Garry Momber

and Coastal Change

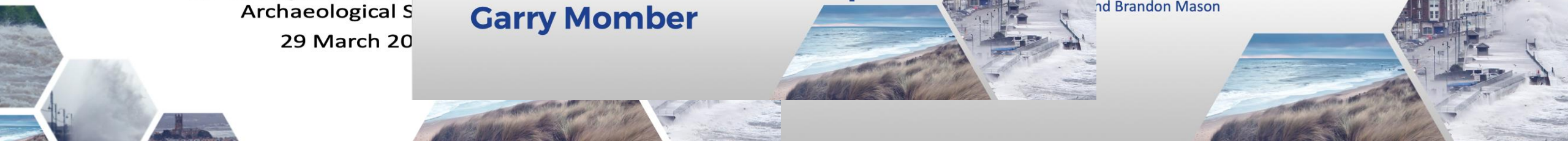
and Brandon Mason



urée
ate and
d.



ne
eology



The SARCC project has used a range of methods to engage the public and stakeholders with a narrative that harnesses artistic, historical and archaeological data to convey the *longue durée*, gain wisdom from hindsight and advocate a way forward with Nature Based Solutions.

